

Traffic and Parking
Islington Council
1 Cottage Road
London
N7 8TP

T 020 7527 2000
E publicrealm@islington.gov.uk
W www.islington.gov.uk

August 2020

School Street – Copenhagen Primary School

Dear Residents/Business,

As part of the council's People Friendly Streets Programme and Transport Response to Covid-19, we are rolling out School Streets across Islington. Following a successful consultation held in March where 69% of respondents were in favour of the scheme, we will be implementing a School Street on Treaty Street for Copenhagen Primary School enabling young people and parents to stay physically active and healthy as they travel to and from school.

The School Street will be installed under an 18-month experimental traffic order with the council closely monitoring the street to assess the impact on the local area. After 12 months, you will be invited to have your say alongside the school, parents and neighbours on whether the School Street should remain in place permanently.

How the scheme works:

From 7 September 2020 vehicles will not be permitted to enter Treaty Street from Monday to Friday between the times of 8.15am-9.00am and 3.00pm-3.45pm during term time unless they have been given an exemption. Permits for the School Street zone will be provided based on the council's records of residents and businesses who have existing parking permits within the extents for the School Street. Residents who live within the closure area and have an existing parking permit will not need to apply for a School Street permit as they will automatically be provided with a permit for the School Street so they can access the street during the restricted hours.

Vehicles already in a paid parking bay prior to the start of the street closure restrictions and parked within the limited parking time stated on the sign will be permitted to stay in the parking bay. Vehicles without a permit will not be allowed to enter the street and access the paid parking bays during the restricted times.

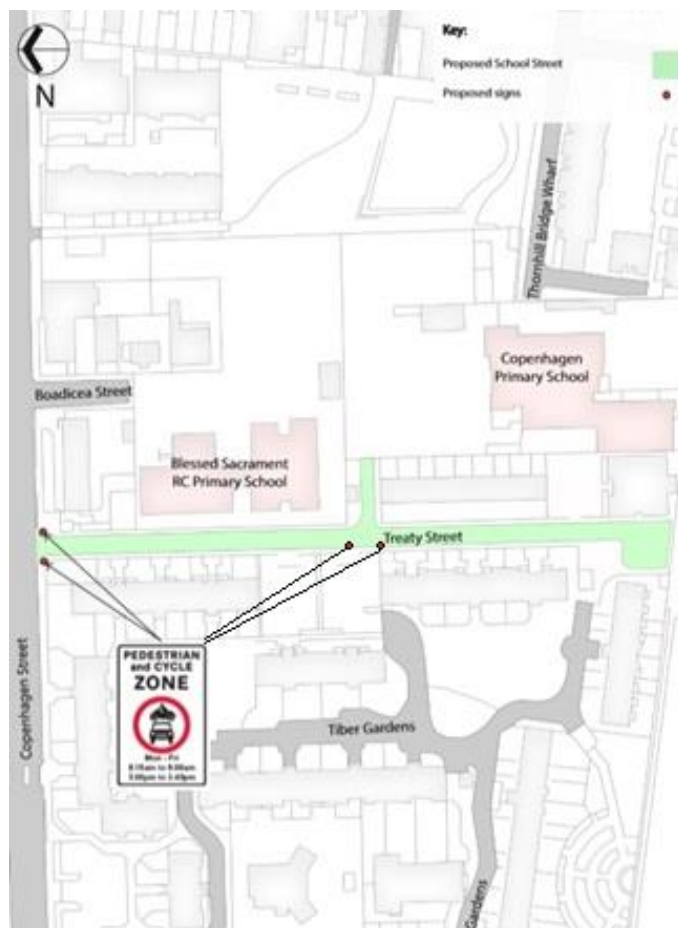
Blue badge holders will be able to contact the council for an exemption but will only be able to use the road for access and not as a through route during the times of operation. The road will remain open to pedestrians and cyclists during the school streets period of operation.



Signs will inform drivers of the restrictions before the entrances to the closed street. Non-registered vehicles entering the street during the times of operation will be identified by camera and issued a penalty charge notice of £65.00.

For more information about the Islington School Streets programme, please visit: www.islington.gov.uk/schoolstreets

Below is a plan of the School Street closure:



If you have any questions, then please get in touch with the Schools Streets team at Schoolstreets@islington.gov.uk

Thank you.

If you would like this document in large print or Braille, audiotape or in another language, please telephone 020 7527 2000