

# Islington Council Annual Infrastructure Funding Statement 2020/21

For Community Infrastructure Levy (CIL) and  
Section 106



# 1.0 Introduction

## 1.1 Infrastructure Funding Statement

The Infrastructure Funding Statement (IFS) is an annual report, as required under the Community Infrastructure Levy (Amendment) (England) Regulations 2019. This IFS covers the period from 1 April 2020 to 31 March 2021 and is the second to be published by the London Borough of Islington (LBI).

The IFS outlines developer contributions collected by LBI through the Community Infrastructure Levy (CIL) and Section 106 Agreements in the reporting year. The document is set out in three main sections: secured, received and spent contributions.

The purpose of IFS is to provide easily accessible and up-to-date information about developer contributions in Islington. The document provides details of the array of projects and infrastructure that have been improved from these funding sources through the previous year. The aim of the IFS is to increase the transparency around the collection, allocation and expenditure of developer contributions funds.

## 1.2 Developer Contributions

Developer contributions ensure that development impacts in Islington are mitigated and sufficient infrastructure is provided. These contributions are secured through two mechanisms: the Community Infrastructure Levy and planning obligations (Section 106 and Section 278 Agreements).

### **Community Infrastructure Levy**

The Community Infrastructure Levy (the 'levy') is a charge which can be levied by local authorities on new development in their area. It is an important tool for local authorities to use to help them deliver the infrastructure needed to support development in their area.

The levy only applies in areas where a local authority has consulted on, and approved, a charging schedule which sets out its levy rates and has published the schedule on its website.

Most new development which creates net additional floor space of 100 square metres or more, or creates a new dwelling, is potentially liable for the levy. The levy rates are set out in the Islington CIL Charging Schedule and are non-negotiable.

### **Planning Obligations**

Planning obligations, secured through Section 106 Agreements of the Town and Country Planning Act 1990, are used to make developments acceptable in planning terms that would not be acceptable otherwise. Obligations can include either direct provision of a service or facility, financial contributions towards a provision made by the Council or external service provider, or both. Obligations reflect the priorities and objectives set out in the London Plan and in Islington's Development Plan Documents and Supplementary Planning Documents.

Full Developer Contributions Data for 2020/21 can be found below:

- [Developer Agreements](#)
- [Developer Agreement Contributions](#)
- [Developer Agreement Transactions](#)

## 2.0 Key Headlines

### 2.1 Community Infrastructure Levy

- CIL receipts significantly decreased in the 2020/21 financial year (£4.26m represents a reduction of £5.30m from the previous 2019/20 financial year).
- £1.74m of receipts from Islington's CIL was spent on establishing the Council's People Friendly Streets Programme.
- £640,000 of receipts will be directed towards local ward-based community projects (known as 'Local CIL').

### Mayoral Community Infrastructure Levy

- £2,862,619 of funding was collected on behalf of the Mayor of London to help finance Crossrail.

### Islington Community Infrastructure Levy – Apportionate

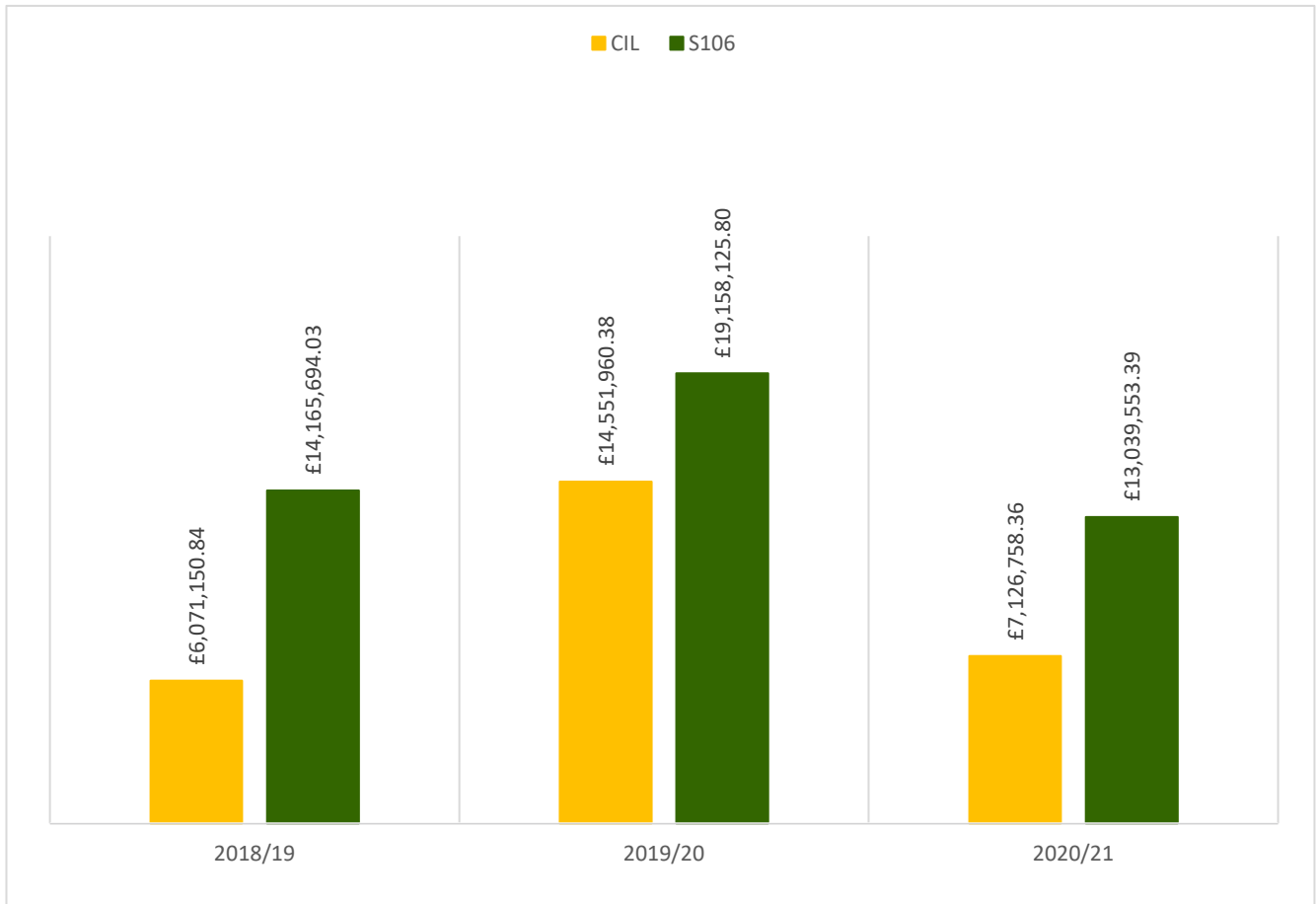
The Community Infrastructure Levy receipts in Islington are split as follows:

- **Strategic CIL (50%):** Used for strategically important infrastructure projects on the Council's Capital Programme.
- **Strategic-Local CIL (35%):** Introduced in April 2019 to strike a balance between Strategic and Local CIL, Strategic-Local CIL enables ward councilors to recommend allocation of 35% of CIL collected in their wards to projects which are considered to be strategically and locally significant. This provides greater flexibility and aides more holistic approach to allocating funds collected from different wards.
- **Local CIL (15%):** For spend on ward-based local projects set out in ward level community plans.

### 2.2 Planning Obligations

- In most cases, the Islington CIL has replaced the use of Planning Obligations in S106 agreements to secure contributions towards general infrastructure improvements from development.
- Planning Obligations continue to substantially contribute towards mitigation of development impacts and is a key mechanism in delivering Council's priorities, such as genuinely affordable housing and opportunities to access employment for local residents.
- Around one third (32%) of all receipts in the reporting year are to be transferred to TfL to be spent on Crossrail.
- In the past three years, the amount of planning obligations received have fluctuated. Obligations increased significantly between 2018/19 and 2019/20, primarily due to some large affordable housing payments. However, they decreased again between 2019/20 and 2020/21, as a result of fewer large developments coming forward, as well as the impact of COVID-19, which stalled many ongoing developments, and delayed or prevented the commencement of others.
- Figure 1 below illustrates CIL and planning obligation receipts across the period of three years.

**Figure 1: Developer Contributions Received 2018-2021**



## 3.0 Securing and Collecting Community Infrastructure Levy

### 3.1 Types of Community Infrastructure Levy

There are two types of community infrastructure levy that Islington Council collects:

- **Mayoral CIL** – a standard charge which applied to most new developments across London and is used to fund the Crossrail project and potentially other large scale transport projects in London; and,
- **Islington CIL** – a standard charge which applies to most new buildings and extensions in the Borough (e.g. residential development).

The Islington CIL Charging Schedule which was introduced in 2014 and map of the charging zones are available to view from [our website](#).

### 3.2 Collection of Community Infrastructure Levy

Figure 2 presents a breakdown of combined Islington CIL and Mayoral receipts over the last three financial years.

**Figure 2: CIL collected by LB Islington between 2018/19 and 2020/21, split by authority**

	Received (Mayor of London)	Received (London Borough of Islington)	Received Total
2018/19	£2,978,694.93	£3,092,455.91	£6,071,150.84
2019/20	£5,001,541.71	£9,550,418.67	£14,551,960.38
2020/21	£2,862,619.25	£4,264,139.11	£7,126,758.36

In 2020/21, the majority of Islington CIL received came from the following developments:

- P2017/3103/FUL - 20 Ropemaker Street, EC2Y - £2,719,042
- P2017/3429/FUL - 240 Seven Sisters Road, N4 - £721,198
- P2020/0648/FUL - 65-69 Parkhurst Road, N7 - £704,281

#### **Total Value of CIL Set Out in All Demand Notices Issued 2020/21**

26 developments liable to CIL commenced in the reporting year. This resulted in the following respective values for Islington and Mayoral CIL being secured.

- Islington - £10,743,840
- Mayor of London - £6,220,368
- Total - £16,964,208

## 4.0 Securing S106 Planning Obligations in 2020/21

### 4.1 Financial Obligations

In the reporting year, over 60 developer agreements were signed and potential financial obligations were secured, totalling £9,469,581 including both Section 106 and Section 278 Agreements. It is important to note, that this figure does not consider indexation and/or interest that may be applied when the money becomes due. Further financial obligations may become payable at later stages, subject to viability reviews and highway reinstatement conditions.

59% of all secured developer contributions were for Affordable Housing provision in Islington, whilst a further 15% will support economic development, by increasing employment and training opportunities for the residents and providing affordable workspace across the Borough. Other substantial contributions are expected to be received for carbon offsetting (12%) measures and for Crossrail (10%) on behalf of TfL. Full details of secured financial planning obligations is laid out in Figure 3.

Developments with significant planning obligations agreed in 2020/21 include:

- P2018/1229/FUL – 145-157 St John Street, EC1V - £882,176
- P2017/2754/FUL – 202-210 Fairbridge Road, N19 - £868,063
- P2017/3389/FUL – 15-27 Gee Street, EC1 - £648,000

### 4.2 Non-Financial Obligations

In addition to monetary obligations, developers are also required to comply with non-financial obligations. Agreements made in 2020/21 included the following non-financial obligations:

- On-site provision of 59 new affordable housing units at 65-69 Parkhurst Road, N7.
- Car-Free Housing – 33 new housing developments in Islington will provide car free dwellings.
- Construction Phase Obligations – developers are required to comply with a number of practice documents, such as Local Procurement, Employment and Training, and Code of Construction Practice.
- Sustainable Energy and Carbon Offsetting – new developments are obligated to submit Green Performance Plans, Energy Statements and permit potential connections to local energy networks.
- Travel Plans – major developments must ensure that opportunities for the use of sustainable transport modes are protected, by developing and adopting travel plans.

**Figure 3: S106 and S278 Financial Developer Contribution Secured in 2020/21 by Contribution Purpose**

<b>Contribution Purpose</b>	<b>Amount Secured 20/21</b>
Affordable Housing	£5,537,817.76
Economic Development	£1,407,149.22
Carbon Offsetting	£1,106,544.76
Crossrail/TFL	£902,160.00
Highways	£277,812.81
Transport and Travel	£112,126.60
Open Space and Leisure	£84,899.28
CoCP Monitoring Fees	£41,070.83



# 5.0 Collecting S106 Planning Obligations

The total amount of money received from planning obligations during the reported year was £13,039,553. The split by contribution type and ward is set out in Figure 4 below.

Islington acts as a collecting authority for Transport for London (TfL) for developer obligations. 32% of monies (£4,113,054) received by the Council in the reporting year were collected on behalf of TfL. This funding is to be spent on costs of Elizabeth Line construction and on TfL led public transport provision and improvements within the Borough.

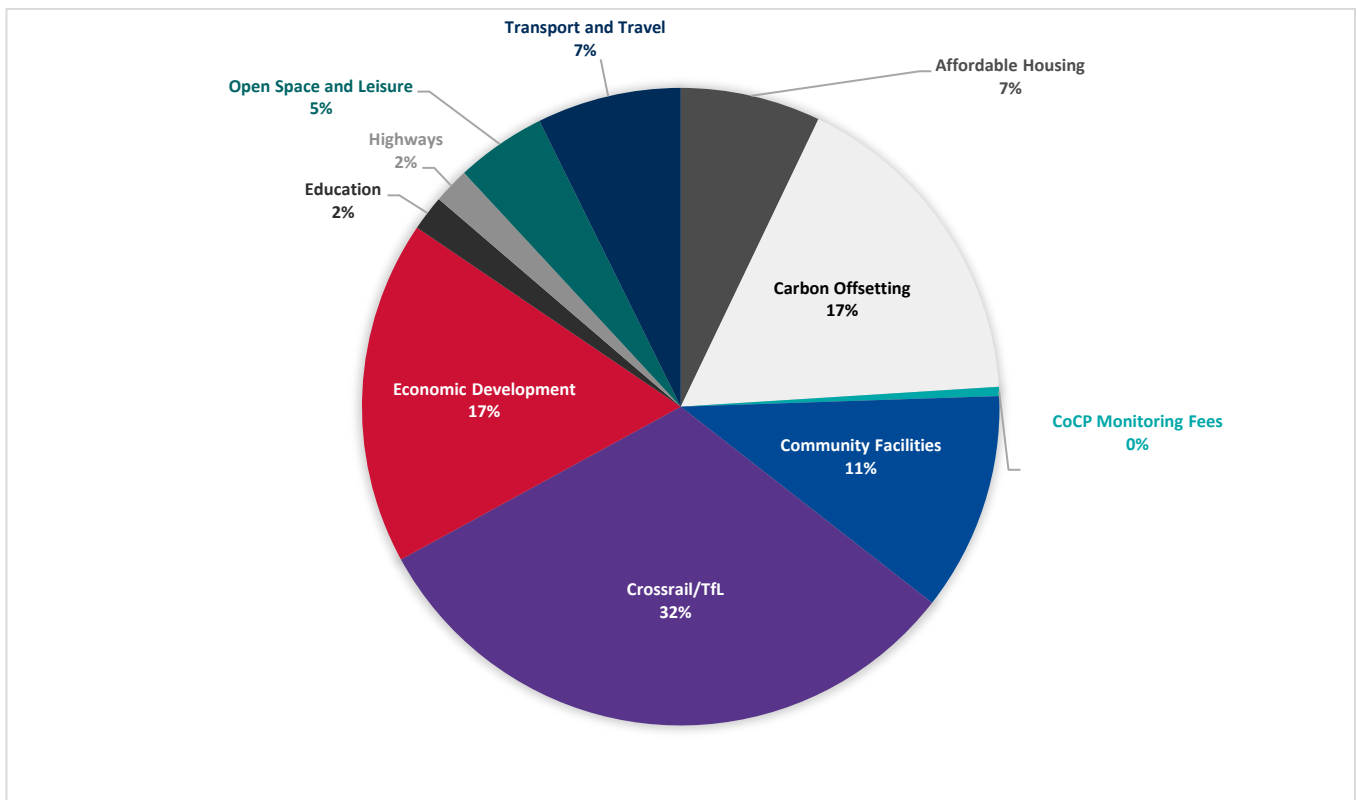
Significant proportions of monies received were also collected for economic development (17%) (including affordable workspaces and provision of education and training work placements) in the Borough, as well as towards carbon offsetting purposes (17%).

The amount of developer obligations received decreased when compared to previous years: between 2019/20 and 2020/21, the receipts amount fell by 32%. The decrease in funds collected is largely due to fewer large scale development commencing works in the reporting year and slower rates of construction due to COVID-19 lockdowns.

The most significant contributions were received from the following developments in Islington in 2020/21:

- P2017/3103/FUL - 20 Ropemaker Street, EC2Y - £4,742,889
- P2013/1089/FUL - 250 City Road, EC1V - £2,547,621
- P2018/1229/FUL - 145-157 St John Street, EC1V - £1,353,300

**Figure 4: Developer Obligations Received in 2020/21 by Contribution Type and Ward**



<b>Contribution Purpose</b>	<b>Total Amount Received in 2020/21</b>
Affordable Housing	£928,150.00
Carbon Offsetting	£2,206,798.92
CoCP Monitoring Fees	£60,598.17
Community Facilities	£1,446,756.55
Crossrail/TfL	£4,113,053.58
Economic Development	£2,278,743.54
Education	£234,214.00
Highways	£238,231.65
Open Space and Leisure	£598,199.71
Transport and Travel	£954,807.27

<b>Ward</b>	<b>Total Amount Received in 2020/21</b>
Barnsbury	£153,000.00
Bunhill	£8,012,017.34
Caledonian	£1,729,741.25
Clerkenwell	£1,612,346.48
Finsbury Park	£635,835.27
Hillrise	£124,222.39
Holloway	£234,214.00
Junction	£386,945.80
St George's	£11,800.00
St Mary's	£108,430.86
Tollington	£51,000.00

## 6.0 Spending Developer Contributions

### 6.1 Developer Contributions Governance

#### Planning Expenditure

This section outlines how CIL and S106 income will be spent and prioritised over the next reporting period. The level and timing of funding will depend on the nature and scale of the development, the number of implemented planning permissions, build-out rates and the phasing of development.

#### Local CIL (15%)

Islington is comprised of 16 wards and Local CIL operates within this framework. The ward that hosts a development retains 15% of the receipt for local infrastructure. Ward councillors recommend projects and programmes for the expenditure of these funds. Each ward in the Borough has a Community Plan containing a ward-councillor approved list of local infrastructure projects. **See Appendix B for collected Local CIL breakdown by ward for the reporting year.**

Islington's Community Plans can be found on [our website](#).

For a project to be allocated Local CIL money it must be on a ward's Community Plan. Any person can make a proposal for a Community Plan project to their relevant ward councillors. At present, proposals are largely put forward by internal council officers from a variety of departments and some local external organisations. The Community Plans also include details of ongoing projects that have been allocated funding, as well as completed projects.

#### Strategic-Local CIL (35%)

In April 2019, the council introduced a Strategic-Local CIL allocation category to strike a balance between Local and Strategic CIL. This enables ward councillors to recommend a further 35% of CIL money collected in their wards to local projects which are strategically significant to the Borough. The process also provides greater flexibility and aides cross-boundary cooperation between wards as they are able to allocate to projects or themes outside of their ward.

#### Strategic CIL (50%)

Strategic CIL is primarily used for qualifying infrastructure projects on the Council's Capital Programme. It also plays a supportive role towards wards that receive little or no CIL in a financial year. It is the Council's policy to ensure each ward has £30,000 per year to allocate to projects on their Community Plan. Therefore, if a ward receives less than £30,000 in Local CIL in a financial year the remaining amount will be topped up at the end of the financial year from the Strategic CIL pot.

## 6.2 Islington CIL Expenditure

### **Strategic CIL**

Over the past three financial years a total of £10,789,372 of Strategic CIL has been spent on a variety of projects.

Examples include:

- Borough-wide LED street lighting upgrade;
- Improvements to the Council's leisure estate;
- Bunhill Heat and Power Network;
- Tufnell Park Primary School expansion;
- Highbury Grove School expansion; and,
- People Friendly Streets Programme.

As a result of the recent changes to the regulations, CIL is no longer restricted to strategic infrastructure projects identified in the Regulation 123 list. This statement effectively replaces the Regulation 123 list.

Strategic CIL will be allocated on an annual basis to support the delivery of strategic infrastructure projects in line with the Borough's Capital Programme. This is a multi-million pound programme, with CIL only representing a small proportion of the various mechanisms funding the programme.

A three year capital programme was approved at Full Council on 25 February 2021 and Members were also asked to note an indicative programme up to 2031. It is likely that Strategic CIL will be directed at the following range of projects over the next two to three years:

- Borough wide cycle hangers
- Tree planting
- People Friendly Streets
- Recycling site improvements
- Children centre repairs and provision of extra places
- School upgrades and repairs
- Libraries modernisation
- Toffee Park youth centre and nursery provision

### **Neighbourhood CIL**

In Islington, 15% of CIL receipts are ringfenced to spend be spent on local projects – this is known as the neighbourhood portion. As per the CIL Regulations the neighbourhood portion of the levy must be spent on the provision, improvement, replacement, operation or maintenance of infrastructure; or anything else that is concerned with addressing the demands that development places on an area.

Since its introduction, we have collected over £5.01m of CIL funding towards local neighborhood projects.

**Figure 5: Neighbourhood CIL Received Since 2018/19**

<b>Year</b>	<b>Amount Recieved</b>
2018/19	£440,674.97
2019/20	£1,360,394.66
2020/21	£607,639.82

As set out in section 6.1, we have introduced new governance arrangements relating to the allocation of funding to ensure a consistent and transparent approach to decision making.

### 6.3 Mayor of London’s CIL

Islington has been collecting CIL on behalf of the Mayor of London since April 2012. These funds are transferred to TfL on a quarterly basis to help finance Crossrail.

The Mayor of London's new charging schedule (known as MCIL2) came into effect on 1 April 2019 and replaces MCIL 1.

MCIL2 will be used to fund both Crossrail 1 (the Elizabeth Line) and Crossrail 2 or other strategically important transport projects. Crossrail is a new high-frequency railway line that will cross London from east-to-west and north-to-south.

In the past financial year, a total of £2,774,550 Mayoral CIL has been transferred to TfL to contribute to the financing of Crossrail.

### 6.4 S106 Planning Obligations Expenditure

As opposed to CIL, the use of Section 106 and Section 278 contributions are largely defined within individual agreements, and therefore, the spending of the funds directly relates to the wording in the deed. In Islington, we classify planning obligations as either discretionary or non-discretionary.

#### **Non-discretionary Funds**

These funds are secured for specific purposes within developer agreements. Examples include contributions secured for specific transport improvements (bus stops, cycle parking), Borough-wide employment and training initiatives, affordable housing, and highway reinstatement.

#### **Discretionary Funds**

These contributions were secured before the adoption of the Islington CIL for infrastructural purposes such as open space, community facilities, transport and environmental improvements. The S106 Agreements do not state specifically what projects the contributions should be spent on, but instead collected funds should be spent in the vicinity of the development site to mitigate the impacts in locality. These funds are allocated at a ward level to projects that are on ward level Community Plan.

## **7.0 Allocated Developer Contributions in 2020/21 and in Previous Reported Years**

### **7.1 CIL Allocations**

#### **2020/21**

The total amount of money from CIL allocated towards infrastructure in the reported year was £2,451,124 and can be broken down as follows:

Strategic CIL - £1,784,625

Strategic-Local CIL - £150,496

Local CIL - £516,002

#### **Previous Monitoring Years**

The total amount of money received prior to the reported year that has not been allocated is £1,360,174. The total amount of CIL collected prior to the reported period that has been allocated is £31,257,897.

### **7.2 Planning Obligations Allocations**

#### **2020/21**

The total amount of money from planning obligations allocated towards infrastructure during the reported year was £10,987,320. Of this amount £5,785,371 was not spent during the reported year.

In addition to the above £4,215,936 was allocated and transferred to TfL, which will be spent towards the costs of Crossrail.

#### **Previous Monitoring Years**

The total amount of money received prior to the reported year that has not been allocated is £3,067,775.

**The full list of allocations made for Section 106 and CIL in 2020/21 can be found in Appendix A.**

## 8.0 S106 & CIL Spending in 2020/21

### Spending 2020/21 Summary:

- The total amount of money from developer contributions spent by LBI during the reported year was £11,428,564.
- Section 106 expenditure amounted to £8,738,265 whilst CIL spending was £2,690,299.
- We also transferred £4,215,936 in S106 Crossrail funding and £2,774,550 Mayoral CIL to TfL.
- The amount of CIL collected since 2014 that has not been spent is £8,203,571. For the reported year specifically £1,599,808 remains unspent.
- Internally, energy decarbonisation remains a key priority for the Council's spending, with 14% of all developer contribution funds spent on energy projects within the Borough. 13% of funds were spent on strategic projects and transport planning, the majority of which were spent on the Council's People Friendly Streets programme. The full list of expenditure by Council's services is set out in Figure 7.
- The total amount of money retained (allocated and unallocated) at the end of the reported year is £34,328,328. The breakdown for each developer contributions source is provided in Figure 6 below.

**Figure 6: Retained Funds at the End of 2020/21**

Retained Funds	
<b>Section 106</b>	£30,065,299
<b>Islington CIL</b>	£4,263,029
<b>Total</b>	£34,328,328

**Figure 7: Developer Contributions Spent by Service**

<b>Service</b>	<b>Amount Spent</b>
Arts and Culture	£9,043.55
Children's Services	£282,809.57
Community Facilities	£152,703.46
Employment & Training	£422,863.90
Energy Services	£2,211,873.96
Estate Parking	£54,845.00
Finsbury Park Mosque (External)	£5,000.00
Greenspace Projects	£615,758.92
Highways	£270,246.86
Housing Development	£1,527,005.38
Housing Special Projects	£750,807.74
Inclusive Economy	£606,520.00
Library & Heritage Services	£2,495.00
Policing & Safety	£81,332.00
Public Health	£170,000.00
Strategic Projects & Transport Planning	£2,030,258.87
Student Accommodation (External)	£222,503.30
Traffic & Parking	£247,659.25
Transport for London (External)	£5,597,644.84
Tree Planting	£150,372.97



## 9.0 S106 & CIL Spending in 2020/21 by Service Area

### Arts and Culture

Infrastructure Project	Section 106 Spent	Local CIL Spent	Date Spent	Spending Description
Caledonian Arts Project/ Festival	£2,487.18		30/03/2021	Music Education Islington for schools in Cally ward.
Creative Schools Project	£1,200.00		17/03/2021	Workshops for schools with Union Chapel.
Old Station Shaft on Central Street/ and City Road - Public Art	£7,843.55		17/03/2021	Completion of public art commission for the new Bunhill II Energy Centre.

#### Old Station Shaft on Central Street and City Road – Public Art



## Children's Services

Infrastructure Project	Section 106 Spent	Local CIL Spent	Date Spent	Spending Description
Ambler Primary School and Children's Centre	£1,750.00		17/03/2021	Outdoor school improvements.
Canonbury Primary School Improvements	£2,633.02		17/03/2021	Provision of new multi-use games area with changing and WC facilities.
The Factory Children's Centre	£3,630.00	£15,000.00	17/03/2021	This project delivered a planting scheme, a mural, a music wall and a mud kitchen.
St Luke's Primary School - New Classroom		£96,008.85	17/03/2021	A new single storey classroom for up to 30 pupils.
Prior Weston Primary School - Outside Play Spaces		£124,479.52	17/03/2021	Re-surfacing of play spaces, replacement of large net cover over the football pitch and the replacement of climbing equipment.
Hornsey Road Children's Centre		£32,821.00	17/03/2021	Improvements to the nursery facilities at Hornsey Road Children's Centre.
Highbury West IT Equipment for Schools		£4,000.00	17/03/2021	Provision of IT equipment for primary school children, to enable remote learning during the COVID-19 lockdown.

### The Factory Children's Centre



## Community Facilities

Infrastructure Project	Section 106 Spent	Local CIL Spent	Date Spent	Spending Description
Wray Crescent Community and Cricket Building	£20,135.00		17/03/2021	Preparatory works for the replacement of the brick pavilion at Wray Crescent Open Space with a new, multi-use building.
Islington Boxing Club	£452.78	£9,547.22	17/03/2021	Support for boxing club activities throughout the year.
Sebbon Street Community Centre	£6,480.00		17/03/2021	Public realm improvements delivered to the area outside Sebbon Street Community Centre.
Community Development Initiatives for Caledonian	£49,797.46		28/02/2021	Support for Caledonian's community development and partnership work. The main outcome being the development of an independent community hub for the ward.
Andover Estate Community Centre		£47,000.00	17/03/2021	Funding to tackle food poverty and waste, as well as measures to deal with loneliness, debt and employment support.
Art in Quaker Gardens		£2,125.00	17/03/2021	Delivery of a series of murals in public areas of Quaker Court and Braithwaite House, which are the gateways to historic Quaker Gardens.
Alsen Day Elderly Centre		£17,166.00	29/03/2021	Delivery of improvements to the Alsen Day Elderly Centre, including provision of computer equipment and new furniture.

### Sebbon Street Community Centre



## Employment and Training

Infrastructure Project	Section 106 Spent	Local CIL Spent	Date Spent	Spending Description
Youth Employability Partnerships Apprentice	£8,121.86		17/03/2021	Funding for an apprentice to support the co-ordination of youth employment offers and requests.
HR Apprenticeship Broker	£22,300.00		17/03/2021	Contribution to costs of a fixed term role in HR to broker apprenticeships from Islington schools.
Employment Programme Staffing	£20,682.87		17/03/2021	Funding for roles to enhance iWork employer engagement with priority sectors.
Section 106 Employment Officer	£57,330.47		17/03/2021	Funding to cover the salary cost of the permanent role of a broker for construction sector apprenticeships and industry training at Islington Council.
Hospitality and Catering Sector Training	£14,689.58		17/03/2021	Funding to deliver Adult Community Learning (ACL) Family Kitchen training provision.
Islington Community Wealth Building Strategy for the Construction Sector	£2,240.00		17/03/2021	Strategy to strengthen construction related training and job opportunities in the Borough.
Section 106 Employment Coach	£46,772.82		17/03/2021	Funding to cover the salary cost of the permanent role of a construction sector employment coach at Islington Council.
Project Manager - 100 Hours of the World of Work	£49,457.05		17/03/2021	Funding to cover the salary cost of a project manager role.
Project Officer - 100 Hours of the World of Work	£43,000.00		17/03/2021	Funding to cover the salary cost of a project officer role.
BIG Alliance Membership Subscription	£6,000.00		17/03/2021	Targeted support for Children Looked After and Pupil Referral Unit (PRU).
ACL Targeted Vocational Short Training Programmes	£32,675.79		17/03/2021	Budget to deliver targeted vocational short training programmes, including courses in Health and Social Care, Digital Skills, and Preparation for Childminding.
Launch of Free Night Schools	£3,540.33		17/03/2021	Funding to provide free evening classes in Maths and English.
Local Skills Strategy	£27,450.01		17/03/2021	Funding to support the local skills strategy.

<b>Infrastructure Project</b>	<b>Section 106 Spent</b>	<b>Local CIL Spent</b>	<b>Date Spent</b>	<b>Spending Description</b>
ESOL Outreach and Engagement Officer	£10,000.00		17/03/2021	Funding for an English for Speakers of Other Languages (ESOL) outreach and engagement officer role.
Adult Learning Communications Campaign	£8,078.00		17/03/2021	Funding for web-based publicity, including the development of an online prospectus, pieces in Islington Life, adverts on social media, Electronic Notice Boards, and leaflets.
Expansion of Youth Bursaries for NEET and Fixed Term Part-time EET Adviser	£4,296.99		17/03/2021	Funding for Youth Employability and Skills Bursaries delivered as part of the Youth Employability and Skills Programme.
World of Work Communications and Website	£894.80		17/03/2021	Funding to deliver the World of Work website.
Team Islington Employment Partnership	£1,000.00		17/03/2021	Budget for Islington Working Partnership events and marketing.
Team Islington Employment Partnership CPD and QA	£3,000.00		17/03/2021	Budget to support continuing professional development and quality assurance processes for Islington Working Partnership.
Euston Mayors Construction Academy	£30,000.00		28/03/2021	Match funding for the Euston Mayors Construction Academy, to help more Londoners train in the skills they need to access construction sector vacancies.
Employment - YOS funded post (50%)	£28,000.00		17/03/2021	Ongoing contribution to a youth employment and skills adviser working with the Youth Offending Services cohort.
City YMCA - Youth Intervention (NASCENT)		£3,333.33	17/03/2021	Delivery of interventions to help young people into work including interactive workshops, pathways to employment work experience, and follow-on training.

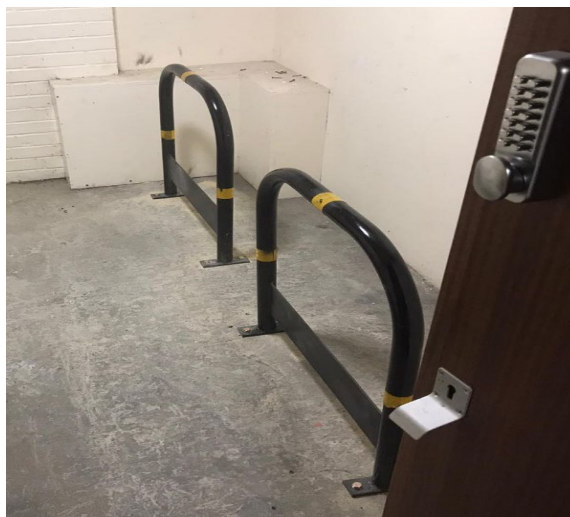
## Energy Services

Infrastructure Project	Section 106 Spent	Local CIL Spent	Date Spent	Spending Description
Energising Small Business	£55,094.00		17/03/2021	Grants to improve the energy efficiency of local businesses or voluntary sector organisations. Carbon savings.
Islington Community Energy Fund	£37,666.34		17/03/2021	Funding to support residents in reducing their energy use and achieving affordable cleaner sources of energy.
Boiler Replacement Programme	£633,439.80		17/03/2021	Boiler Replacement Programme in housing stock.
Powerdowns and LEDs in Voids and Reactive Repairs	£113,655.76		17/03/2021	Installation of LEDs in voids along with reactive repairs, reducing electricity bills for residents and CO2 emissions.
Bunhill Heat and Power Phase 2	£865,101.29		28/03/2021	New Energy Centre at Bunhill which provides most of its heat from a heat pump.
Warmth on Prescription 2016 to 2018	£7,176.82		17/03/2021	Delivery of energy efficiency measures to vulnerable tenants living in fuel poverty.
Warmth on Prescription and Energy Doctor in the Home	£31,118.19		17/03/2021	Delivery of energy efficiency measures to vulnerable tenants living in fuel poverty.
Circosense Installations	£10,000.00		17/03/2021	Installation of circosense intelligent hot water circulation units in corporate buildings.
Energy Gardens on Stations	£29,655.00		17/03/2021	Installation of off-grid solar PV systems to the overground station gardens at Caledonian & Barnsbury and Crouch Hill.
Energy Team Staff Costs for 2020/21.	£418,966.76		17/03/2021	Energy Team staff costs for 2020/21.
Bunhill 2 Information Video		£10,000.00	17/03/2021	Production of a video to provide the public with information about the new Bunhill 2 energy centre.

## Estate Parking

Infrastructure Project	Section 106 Spent	Local CIL Spent	Date Spent	Spending Description
Mildmay Ward Estate Cycle Parking	£6,149.10		17/03/2021	Provision of secure cycle parking at several housing estates in Mildmay.
Clerkenwell Estate Secure Cycle Parking	£4,800.00		17/03/2021	Provision of secure cycle parking at several housing estates in Clerkenwell.
St Mary's Estate Secure Cycle Parking	£2,425.00		17/03/2021	Provision of secure cycle storage to various housing estates in St Mary's.
Electric Charging Point at Clifton Court	£2,700.00		17/03/2021	Installation of an electric vehicle charging at Clifton Court.
Bike Hangers Programme	£33,800.00		17/03/2021	Continued delivery of Islington's Bike Hanger programme.
Mildmay Ward Estate Cycle Parking		£3,175.90	17/03/2021	Provision of secure cycle parking at several housing estates in Mildmay.
Hillrise Secure Estate Cycle Parking		£1,795.00	17/03/2021	Provision of secure cycle parking at several housing estates in Hillrise.

### Mildmay Ward Estate Cycle Parking



## Greenspace Projects

Infrastructure Project	Section 106 Spent	Local CIL Spent	Date Spent	Spending Description
Woodfall Park Improvements	£30,393.13		24/03/2021	Preparatory work for improvements to Woodfall Park, including a design brief, pre-application process and public engagement sessions.
Barnard Park Renewal	£7,813.25		27/03/2021	Preparatory work for the renewal of Barnard Park, following the detailed design and pre-application stages.
Bingfield Park Improvements	£32,500.00		17/03/2021	Preparatory work for improvements to Bingfield Park.
Caledonian Park Clock Tower and Heritage Centre Projects	£7,926.00		27/03/2021	Delivery of an urgent conservation repair of the Caledonian Park Clock Tower and the construction of a resource centre.
Highbury Fields Park Buildings	£10,141.67		17/03/2021	Works to demolish and replace the existing park buildings and bandstand on Highbury Fields, with new intergrated buildings and an outdoor learning garden.
Myddelton Square and Granville Square Play Areas	£540.00		17/03/2021	Preparatory work for the replacement of the children's play equipment in Myddelton Square and Granville Square.
St James' Church Garden	£3,830.50		17/03/2021	Preparatory work for improvements to St James' Church Garden.
Hermit Street Community Gardens - Friend Street	£45,235.00		17/03/2021	Delivery of improvements to Hermit Street Community Gardens including new cycle parking, a water point and new gate system along with work to the garden area.
St Mary's Church Gardens	£287,093.36		17/03/2021	Delivery of improvements to St Mary's Church Gardens, including a re-design, landscaping and tree management.
Radnor Street Park - Play	£14,000.00	£28,807.88	17/03/2021	Installation of additional play equipment for the children's play area of Radnor Street Park.
Canonbury Gardens Landscape Improvements	£49,526.00		17/03/2021	Delivery of landscape improvements at Canonbury Gardens, including the clearance of large shrubs and new planting.
Biddestone Open Space Lighting improvements	£34,305.58		27/03/2021	Installation of new lighting along the pathway through Biddestone Open Space.
Wallace Road/ Grosvenor Avenue Improvement Works	£8,259.07		17/03/2021	Improvements to the public realm at the junction of Grosvenor Avenue and Wallace Road.



Infrastructure Project	Section 106 Spent	Local CIL Spent	Date Spent	Spending Description
Parkland Walk - Bridges, Retaining Walls and Paths		£47,167.00	31/03/2021	Works to address the safety issues with bridges and retaining walls which have deteriorated.
Parkland Walk Local Nature Reserve		£1,800.00	17/03/2021	Installation of a shed to allow tools for volunteer sessions to be kept on site.

### Barnard Park Renewal



### Myddleton Square and Granville Square Play Area



### Wallace Road/ Grosvoner Avenue Improvement Works



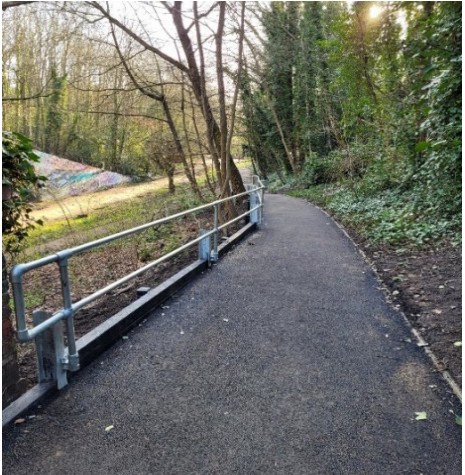
### Caledonian Park Clock Tower and Heritage Centre



**Hermit Street Community Gardens**



**Parkland Walk – Bridges, Retaining Walls and Paths**



## Tree Planting

Infrastructure Project	Section 106 Spent	Local CIL Spent	Date Spent	Spending Description
Liverpool Road Tree Planting	£12,516.64		23/03/2021	Delivery of street tree planting on Liverpool Road.
Finsbury Park Ward Tree Planting	£15,214.50	£32,507.44	23/03/2021	Delivery of street tree planting throughout Finsbury Park ward.
Clerkenwell Ward-Wide Tree Planting	£851.65		23/03/2021	Tree planting and replacement in Clerkenwell in line with the Council's tree strategy.
Caledonian Tree Planting	£2,319.49	£4,132.12	23/03/2021	Delivery of street tree planting throughout Caledonian ward.
Tollington Ward Tree Planting	£5,835.30		23/03/2021	Delivery of street tree planting throughout Tollington ward.
Hillrise Ward Tree Planting	£20,620.13	£1,376.35	23/03/2021	Delivery of street tree planting throughout Hillrise ward.
Tree Planting - Tavistock Terrace	£4,999.74		23/03/2021	Replacement of five previously lost trees on Tavistock Terrace.
St Peter's Ward Tree Planting		£9,999.65	23/03/2021	Delivery of street tree planting throughout St Peter's ward.
St Mary's Ward Tree Planting		£20,000.00	18/12/2020	Delivery of street tree planting throughout St Mary's ward.
Highbury East Ward Tree Planting		£10,000.00	23/03/2021	Delivery of street tree planting throughout Highbury East ward.
Junction Ward Tree Planting		£9,999.96	23/03/2021	Delivery of street tree planting throughout Junction ward.

### Finsbury Park Ward Tree Planting



## Highways

Infrastructure Project	Section 106 Spent	Local CIL Spent	Date Spent	Spending Description
Baldwin Street and Peerless Street	£925.75		17/03/2021	Resurfacing of the carriageways and widening of the footways of Baldwin Street and Peerless Street.
Gwynne Place Streetscape Improvements	£8,404.06		17/03/2021	Improved lighting and public realm improvements to deter anti-social behaviour and reduce crime.
Fortune Street Area	£10,000.00		17/03/2021	Preparatory work undertaken including finalising the design brief for the Park.
Highway Reinstatement - 15 Garrett Street	£6,323.28		17/03/2021	Highway reinstatement following development at 15 Garrett Street.
Highway Reinstatement - 248 to 250 St Paul's Road	£4,275.00		17/03/2021	Highway reinstatement following development at 248-250 St Paul's Road.
Highway Reinstatement - 38 Northampton Road	£23,293.63		17/03/2021	Highway reinstatement following development at 38 Northampton Road.
Highway Reinstatement - Packington Estate	£95,947.99		17/03/2021	Highway reinstatement following development at the Packington Estate.
Highway Reinstatement - Almeida Islington Square	£120,041.97		17/03/2021	Highway reinstatement following development at Islington Square.
Whitecross Street Christmas Lights and Event		£1,035.18	17/03/2021	Installation of new fixtures, fittings and lights, including an arch signage at each end of Whitecross Street.

## Housing Development

<b>Infrastructure Project</b>	<b>Section 106 Spent</b>	<b>Local CIL Spent</b>	<b>Date Spent</b>	<b>Spending Description</b>
King Square Estate	£105,314.35		17/03/2021	Landscaping, public realm and community space improvements to King Square Estate.
Macclesfield House	£2,810.00		17/03/2021	Consultations carried out for design, cost and feasibility at Macclesfield House.
King Square Community Nursery at Rahere House	£2,750.00		17/03/2021	Provision of an outdoor play area at King Square Community Nursery.
Affordable Housing 20/21 Transfers	£1,416,131.03		17/03/2021	Allocations to the new build programme, including developments at Charles Simmons House and Dover Court.

## Housing Special Projects

Infrastructure Project	Section 106 Spent	Local CIL Spent	Date Spent	Spending Description
Weston Rise Estate Multi-use Games Area	£61,095.00		17/03/2021	Upgrade of the Weston Rise Estate football pitch to a multi-use games area.
Popham Road Estate Environmental Improvements	£34,410.00		17/03/2021	Delivery of environmental improvements to Popham Road Estate, including new lights, bin enclosures and maps and wayfinding signs.
Shearling Way Estate	£95,318.00		17/03/2021	Delivery of environmental improvements at Shearling Way Estate.
Sherston Court	£12,600.00		17/03/2021	Redevelopment of the redundant football pitch at Sherston Court into a food growing area.
Public Realm Improvements at Watersview Estate	£17,788.00		17/03/2021	Delivery of public realm improvements at the Watersview Estate including new column lamps, motion sensor lights and additional signage.
St Luke's Estate Open Space and Podium Garden Improvements	£42,297.00		17/03/2021	Delivery of landscape improvements to gardens and the installation of a new ballcourt.
Kestrel House Open Space	£37,966.00		17/03/2021	Improvements to the open space around Kestrel House, including landscaping and play areas.
Resurfacing Penderyn Way Estate	£16,850.00		17/03/2021	Resurfacing the highway and footway at Penderyn Way Estate.
Kingsdown Road and Sussex Way Open Space	£4,784.65	£37,929.69	17/03/2021	Delivery of environmental improvements on an area of open space at Kingsdown Road and Sussex Way to create a park for local residents.
Pollard Close Improvements	£76,992.40		17/03/2021	Delivery of public realm improvements at Pollard Close Estate to combat anti-social behaviour.
Kings Square Gardens/Turnpike House	£30,564.00		17/03/2021	Restoration of the archway at the entrance of Turnpike House including planning, contractor tendering process and public consultation.
Coltash Court Planters	£9,800.00		10/03/2021	Installation of planters in front of the main entrance at Coltash Court.
Wenlake Estate Improvements	£9,480.00		17/03/2021	Preparatory work to explore which environmental improvements can be made throughout the Wenlake Estate.

<b>Infrastructure Project</b>	<b>Section 106 Spent</b>	<b>Local CIL Spent</b>	<b>Date Spent</b>	<b>Spending Description</b>
Bevin Court Cyle Storage Shed	£5,000.00		17/03/2021	Delivery of a storage facility for the gardening group at Bevin Court.
Bevin Court Improvements	£147.00		17/03/2021	Improvements to the public realm at Bevin Court, including new planters and a bike store.
Melyn Close Lighting and Play Area Improvements	£24,255.00		17/03/2021	Upgrading of the column and wall lights on the Melyn Close Estate and refurbishment of the children's play area.
Coombe House Maps and Wayfinding Signage	£7,711.00		17/03/2021	Installation of new maps and wayfinding signage, to enable better navigation, at Coombe House Estate.
Brecknock Road MUGA Refurbishment	£60,000.00		17/03/2021	Upgrade of the multi-use games area at Brecknock Road.
Haslam Close Multi-use Games Area Refurbishment	£10,367.00		17/03/2021	Delivery of improvements to the multi-use games area in Haslam Close.
Finsbury Estate Playground	£22,327.30	£1,762.70	17/03/2021	Delivery of improvements to the play equipment and surfaces at Finsbury Estate playground.
New Maps and Wayfinding Signage Brecknock Estate	£2,717.00		17/03/2021	Installation of new maps and wayfinding signage, to enable better navigation, at Brecknock Estate.
Improvement Works to Upper Hilldrop Estate	£58,596.00		17/03/2021	Delivery of improvements to the Upper Hilldrop Estate, including the redesign of the play area at Rushmore House.
Melyn Close Decluttering Works	£10,000.00		17/03/2021	Delivery of improvements to Melyn Close Estate with the removal of redundant fixtures and fittings including old signage, lights and bollards.
Miranda Estate - Pedestrian Improvements		£15,700.00	17/03/2021	Delivery of pedestrian improvements at Miranda Estate, including wider footpaths, dropped kerbs and pedestrian road crossings.
Works to 21 to 36 Saxonbury Court		£39,350.00	17/03/2021	Redesign and redevelopment of the play area at Saxonbury Court.
Popham Community Centre - Internal Decorations		£5,000.00	17/03/2021	Delivery of internal improvements to Popham Community Centre, including a full refurbishment of the kitchen.



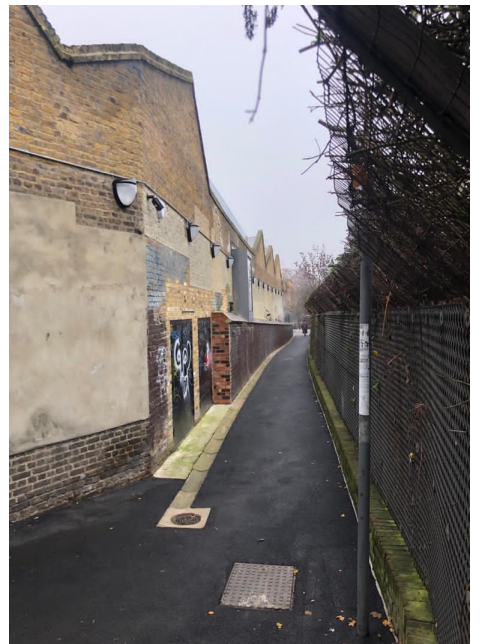
## Weston Rise Estate Multi-Use Games Area



### Kingsdown Road and Sussex Way Open Space



### Shearling Way Estate



### Bevin Court Cycle Storage Shed



### Public Realm Improvements at Watersview Estate



### Kings Square Gardens/ Turnpike House



### Haslam Close Multi-Use Games Area



### Coombe House Maps and Wayfinding Signage



### Works to 21 to 36 Saxonbury Court



### Miranda Estate Pedestrian Improvements



## Inclusive Economy

Infrastructure Project	Section 106 Spent	Local CIL Spent	Date Spent	Spending Description
FP Good Growth Funds: Fonthill Road Shops Signage	£8,680.00		17/03/2021	Installation of new signage for the new affordable workspace at 113 Fonthill Road.
48 Seven Sisters Road Youth Hub	£50,144.00		17/03/2021	Conversion of site into an affordable community workspace to be used by youth providers.
FP Good Growth Funds: Andover Estate Fashion Kit Out	£645.45		17/03/2021	Installation of light industrial fashion manufacture equipment and IT hardware to be used by fashion startups at the Andover Estate.
FP Good Growth Funds: Fonthill Road Tech Workspace Lift Installation	£5,999.00		17/03/2021	Installation of a lift in the building which will house an affordable workspace for the technology sector in the Fonthill Road area of Finsbury Park.
Jean Stokes Community Centre	£30,558.00		28/02/2021	Delivery of refurbishment works at the Jean Stokes Community Centre.
Inclusive Economy Initiatives for Caledonian	£33,679.00		28/02/2021	Delivery of improvements to the high street offer on Caledonian Road to existing residents and businesses, including the occupiers at Kings Cross Central.
Inclusive Economy Consultancy Fees	£3,832.00		17/03/2021	Funding for consultancy fees required for inclusive economy projects.
Inclusive Economy Team Leader E and S funding	£70,964.41		18/03/2021	Contribution to staff costs in Inclusive Economy, as part of Local Economies Programme.
Affordable Workspace Programme - Business Rate Liabilities	£39,905.17		29/03/2021	Funding to cover any financial liabilities incurred by the council during the delivery of the Affordable Workspace Programme.
Community Wealth Building Team	£338,147.00		17/03/2021	Funding for staffing resources for the delivery of the Affordable Workspace Programme.
Inclusive Economy Initiatives for Clerkenwell		£23,965.97		Delivery of improvements to the high street offer on Caledonian Road to existing residents and businesses, including the occupiers at Kings Cross Central.

## Library and Heritage Services

Infrastructure Project	Section 106 Spent	Local CIL Spent	Date Spent	Spending Description
South Library - Feasibility Study	£2,495.00		17/03/2021	Feasibility study for improvements at South Library, to maximise use of the first floor space and generate rental income.

## Public Health

Infrastructure Project	Section 106 Spent	Local CIL Spent	Date Spent	Spending Description
CoCP Monitoring 2020/21	£170,000.00		17/03/2021	Funding for the costs of monitoring developers' compliance with S106 obligations under the Code of Construction Practice.

## Policing and Safety

Infrastructure Project	Section 106 Spent	Local CIL Spent	Date Spent	Spending Description
CCTV Cameras on Upper Street	£47,244.00		17/03/2021	Installation of a CCTV Camera on Upper Street near St Mary's Church.
Designing Out Crime on Blackstock Road	£5,000.00		17/03/2021	Funding for outreach workers and the installation of CCTV on Blackstock Road and the surrounding areas.
Additional Park Guard Patrols in Holloway	£29,088.00		23/03/2021	Additional security patrols in Pollard Close, Lorraine Estate and Biddestone Road Park.

## Strategic Projects and Transport Planning

Infrastructure Project	Section 106 Spent	Local CIL Spent	Date Spent	Spending Description
Muslim Welfare House Pathway Improvements	£10,000.00		17/03/2021	Improvements to the pathway outside the Muslim Welfare House.
Islington Boat Club	£7,811.00		17/03/2021	Preparatory work for new facilities to offer a wider range of activities and help to support its future.
ScootAbility Service	£50,000.00		17/03/2021	Delivery of the ScootAbility service, in partnership with Camden Council, which loans scooters, power chairs and wheelchairs to members with restricted mobility.
School Street on Carleton Road (Tufnell Park)	£10,000.00		17/03/2021	Delivery of a School Street on Carleton Road, which hosts both Tufnell Park Primary School and The Bridge Secondary School.
People Friendly Streets Programme	£95,953.00		31/03/2021	Delivery of social distancing works for Islington's Low Traffic Neighbourhoods.
Social Distancing Measures	£84,366.00		17/03/2021	Delivery of additional social distancing measures on main roads.
812 Bus Service		£31,759.63	17/03/2021	Funding for Islington's only Council run bus service in the Borough.
People Friendly Streets Programme		£1,740,369.24	31/03/2021	Works to deliver the Low Traffic Neighbourhood programme.

### People Friendly Streets Programme



## People Friendly Streets Programme (continued)





## Traffic and Parking

Infrastructure Project	Section 106 Spent	Local CIL Spent	Date Spent	Spending Description
Mayton Street Traffic Improvements	£31,642.00		17/03/2021	Traffic improvements to the Hertslet Road, Seven Sisters Road and Mayton Street area.
Baltic Street West/ Crescent Row	£139,901.53		23/03/2021	Creation of new public space by relocating motorcycle parking and providing new paving, seating and landscaping.
Hemingford Road/ Lofting Junction Zebra Crossing	£8,750.00	£8,750.00	17/03/2021	Improvements to the zebra crossing at the junction with Hemingford Road and Lofting Road.
Lamp Post Charging Points	£58,615.72		17/03/2021	Installation of lamp post charging points throughout the Borough.

### Baltic Street West/ Crescent Row



### Hemingford Road/ Lofting Junction Zebra Crossing



## Lamp Post Charging Points



## External

Infrastructure Project	Section 106 Spent	Local CIL Spent	Date Spent	Spending Description
TfL Transfers	£5,597,644.84		24/03/2021	Contributions transferred to TfL for Crossrail and other TfL projects
Finsbury Park Mosque - Roof Repairs		£5,000.00	17/03/2021	Funding for electrical repairs associated with the leaky roof at Finsbury Park mosque.
Student Accommodation Bursary	£222,503.30		31/03/2021	Funding for student accommodation bursaries.

## Monitoring Fees

Infrastructure Project	Section 106 Spent	CIL Spent	Date Spent	Spending Description
Mayoral CIL (TfL) Admin Fees		£111,985.00		Monitoring fees spent on staff costs for CIL administration.
CIL Admin Fees		£294,654.00		Monitoring fees spent on staff costs for CIL administration.
S106 Monitoring Fees	£101,000.00			Monitoring fees spent on staff costs for monitoring of planning obligations.

## Appendix A: Allocating Developer Contributions 2020/21

Infrastructure Project	Section 106 Allocated	Unspent S106	Local CIL Allocated	Unspent CIL	Date of Allocation
48 Seven Sisters Road Youth Hub			£18,000.00	£18,000.00	10/12/2020
AccessAble Guides for Businesses in Islington (3 years)	£21,000.00	£21,000.00			15/10/2020
ACL Targeted Vocational Short Training Programmes	£25,429.36	£18,154.22			11/12/2020
Additional Park Guard Patrols in Holloway	£52,416.00	£23,328.00			15/10/2020
Adult Learning Communications Campaign	£13,913.00	£13,835.00			10/12/2020
AEB Energising Small Business	£150,000.00	£150,000.00			25/03/2021
Energy Efficiency Measures - Wray Crescent	£54,500.00	£54,500.00			15/10/2020
Energy Team Staff Costs for 2020/21 and 2021/22	£1,125,000.00	£706,033.24			15/10/2020
Ground Source Heat Pump and Green Roof at Barnard Park	£43,300.00	£43,300.00			09/07/2020
LED Lighting at Waste and Recycling Centre	£5,184.00	£5,184.00			10/12/2020
Library of Things - Bright Sparks	£30,000.00	£30,000.00			15/10/2020
Solar Charging Points for Electric Vehicles	£90,000.00	£90,000.00			10/12/2020
Affordable Workspace Programme - Business Rate Liabilities	£544,726.28	£504,919.86			25/03/2020
Ambler Primary School Sensory Garden and Improvements to Outside Learning Areas	£24,133.00	£24,133.00	£25,867.00	£25,867.00	09/07/2020
Andover Estate Community Centre			£23,500.00	£23,500.00	25/03/2021
Andover Estate Public Realm Enhancement	£150,000.00	£150,000.00			02/10/2020
Bespoke 1:1 Skills Tuition for Vulnerable Groups	£19,000.00	£19,000.00			10/12/2020
BIG Alliance Membership Subscription	£6,134.09	£6,000.00			01/04/2020
Bike Hangers Programme	£100,000.00	£66,200.00			15/10/2020
Brunswick Close Estate	£80,000.00	£80,000.00			29/09/2020

<b>Infrastructure Project</b>	<b>Section 106 Allocated</b>	<b>Unspent S106</b>	<b>Local CIL Allocated</b>	<b>Unspent CIL</b>	<b>Date of Allocation</b>
Bunhill Inclusive Economy Initiatives			£104,000.00	£104,000.00	15/10/2020
Canonbury Court Open Space	£11,943.24	£11,943.24			23/12/2020
Centre 404 Capital Developments	£5,339.69	£5,339.69			23/12/2020
Clerkenwell Common	£400,000.00	£400,000.00			10/12/2020
Clerkenwell Green	£12,711.21	£12,711.21			11/11/2020
Contingency - Accessible Transport and Sustainable Transport	£100,000.00	£100,000.00			16/10/2020
Contracting Resource to Support a Blended Work Experience Programme	£8,000.00	£8,000.00			10/12/2020
Employment - YOS Funded Post (50%)	£28,000.00	£28,000.00			01/04/2020
Employment Programme Staffing	£80,006.69	£59,323.82			10/12/2020
Employment-Fixed Term EET adviser	£27,180.00	£27,180.00			10/12/2020
ESOL Outreach and Engagement Officer	£10,000.00	£10,000.00			30/09/2020
Estate Travel Plans	£15,000.00	£15,000.00			15/10/2020
Euston Mayors Construction Academy	£30,000.00	£30,000.00			10/12/2020
Expansion of Youth Bursaries for NEET and Fixed Term Part-time EET Adviser	£70,901.69	£69,025.54			10/12/2020
Finsbury Park Ward Tree Planting			£34,800.00	£2,292.56	07/10/2020
Fonthill Road Affordable Workspace Building	£127,300.00	£127,300.00			15/10/2020
Highway Reinstatement Almeida Islington Square	£212,921.10	£92,879.13			28/05/2020
Hilldrop Crescent Improvements	£80,844.06	£80,844.06	£14,155.94	£14,155.94	23/04/2020
Hospitality and Catering Sector Training	£56,433.00	£56,433.00			10/12/2020
HR Apprenticeship Broker	£1,286.80	£1,286.80			30/09/2020
Improvement Works to Upper Hilldrop Estate	£60,000.00	£1,404.00			23/04/2020
Inclusive Economy Community Engagement Post	£85,333.00	£85,333.00			01/04/2020

<b>Infrastructure Project</b>	<b>Section 106 Allocated</b>	<b>Unspent S106</b>	<b>Local CIL Allocated</b>	<b>Unspent CIL</b>	<b>Date of Allocation</b>
Inclusive Economy Officer Apprenticeship			£25,000.00	£25,000.00	15/10/2020
Inclusive Economy Team Leader E and S funding	£65,000.00	£59,035.59			01/04/2020
Isledon Road Gardens Improvements			£350,000.00	£350,000.00	25/03/2021
Islington Community Wealth Building Strategy for the Construction Sector	£118,647.06	£116,407.06			10/12/2020
King Henry's Adventure Playground	£15,375.68	£15,375.68	£109,624.32	£109,624.32	26/03/2021
King Square Community Nursery at Rahere House	£10,000.00	£7,250.00			10/12/2020
Kings Square Gardens/Turnpike House	£109,000.00	£78,436.00			15/10/2020
Launch of Free Night Schools	£23,488.49	£23,330.30			30/09/2020
London Living Wage Annual Programme	£1,066.00	£1,066.00			01/04/2020
Myddelton Square and Granville Square Play Areas	£33,000.00	£32,460.00			10/12/2020
Nailour Estate			£50,000.00	£50,000.00	10/12/2020
New Maps and Wayfinding Signage Brecknock Estate	£10,000.00	£7,283.00			23/04/2020
New Orleans Walk CCTV			27,653.67	27,653.67	01/04/2020
Newington Green Drinking Fountain	£5,335.50	£5,335.50			10/12/2020
Old Street and Clerkenwell Road - Bunhill			£250,000.00	£250,000.00	09/07/2020
Penderyn Way New Tree Pits			£20,000.00	£20,000.00	15/10/2020
People Friendly Streets Programme	£340,936.75	£306,681.00			31/03/2020
Planting on Newington Green (Near Ferntower Road)			£12,556.00	£12,556.00	01/10/2020
Popham Road Estate Environmental Improvements	£74,126.17	£39,716.17			22/12/2020
Project Manager - 100 Hours of the World of Work	£81,255.92	£31,798.87			01/04/2020
Project Officer - 100 Hours of the World of Work	£34,179.51	£29,225.32			10/12/2020
Public Realm Improvements at Watersview Estate	£20,000.00	£2,212.00			23/12/2020

<b>Infrastructure Project</b>	<b>Section 106 Allocated</b>	<b>Unspent S106</b>	<b>Local CIL Allocated</b>	<b>Unspent CIL</b>	<b>Date of Allocation</b>
Redbrick Estate CCTV Installation	£150,000.00	£150,000.00			10/12/2020
Resurfacing Penderyn Way Estate	£40,000.00	£23,150.00			15/10/2020
Robert Blair Primary School - Reconfiguring Entrances and Frontage	£51,250.00	£51,250.00	£90,250.00	£90,250.00	10/12/2020
Rowstock Gardens / Camden Road Estate Security Improvements	£30,000.00	£30,000.00			09/07/2020
Section 106 Employment Coach	£76,976.16	£46,427.18			01/04/2020
Section 106 Employment Officer	£56,801.88	£56,469.53			01/04/2020
Sherston Court			£10,500.00	£10,500.00	10/12/2020
Small Scale Environmental Improvements on Estates	£150,000.00	£150,000.00			15/10/2020
Spa Green Estate	£23,184.50	£23,184.50	£76,815.50	£76,815.50	29/09/2020
St. George's Ward Estate Planters	£8,000.00	£8,000.00			09/07/2020
St. George's Ward Wide Tree Planting	£7,334.56	£7,334.56	£2,665.44	£2,665.44	25/03/2021
St. Luke's Over 55s Gardening Project	£35,000.00	£35,000.00			25/03/2021
St. Luke's Wellbeing Hub	£35,000.00	£35,000.00			25/03/2021
Staff Costs - P&D Budget Savings	£100,000.00	£100,000.00			15/10/2020
Support for K&M Academy	£37,000.00	£37,000.00			10/12/2020
Team Islington Employment Partnership CPD and QA	£1,870.00	£1,870.00			01/04/2020
Team Leader People Friendly Streets	£150,000.00	£150,000.00			16/10/2020
Town Hall Cycle Parking	£45,000.00	£45,000.00			15/10/2020
Tufnell Park School Play Area Improvements			£15,000.00	£15,000.00	25/03/2021
Vibast Community Centre 5 Year Funding			£740,206.00	£740,206.00	25/03/2021
Waterside Adventure Playground Zipwire			5,873.83	5,873.83	26/03/2021
Wenlake Estate Improvements	£292,097.79	£285,520.00			09/07/2020
Weston Rise Estate Multi-use Games Area	£20,000.00	£20,000.00			10/12/2020

<b>Infrastructure Project</b>	<b>Section 106 Allocated</b>	<b>Unspent S106</b>	<b>Local CIL Allocated</b>	<b>Unspent CIL</b>	<b>Date of Allocation</b>
Whittington Park Centre			22,656.00	22,656.00	01/04/2020
Works to 21 to 36 Saxonbury Court			£40,000.00	£650.00	25/03/2021
World of Work Communications and Website	£1,000.00	£1,000.00			30/09/2020
Youth Employability Partnerships Apprentice	£26,914.25	£19,614.60			10/12/2020



## Appendix B: Collected CIL 2020/21 - Ward Level Breakdown

<b>Ward</b>	<b>Local CIL</b>
Barnsbury	£16,572.69
Bunhill	£312,728.93
Caledonian	£1,060.06
Clerkenwell	£71,953.58
Finsbury Park	£88,307.07
Hillrise	£5,725.34
Holloway	£15,609.03
Junction	£12,545.96
St. George's	£82,550.43
Tollington	£586.73