



Putting Children First

**Offer day:
16 April
2024**

Islington Schools: Inspiring Learning and Achievement

Your guide to the school application process
for children born between: **1 September 2019**
and **31 August 2020**

Closing date: 15 January 2024

www.islington.gov.uk/admissions

Location map

Key

- Primary Schools
- Municipal Offices/Town Hall
- + Rail Stations
- Underground Stations
- Parks and open space
- Major roads
- Minor roads
- + Rails lines

1. Ambler Primary School and Children's Centre
2. Ashmount Primary School
3. Blessed Sacrament Catholic Primary School
4. Canonbury Primary School
5. Christ the King Primary School
6. City of London Primary Academy (COLPA-I)
7. Drayton Park Primary School
8. Duncombe Primary School
9. Gillespie Primary School
10. Grafton Primary School
11. Hanover Primary School
12. Hargrave Park School
13. Highbury Quadrant Primary School
14. Hugh Myddelton Primary School
15. Hungerford Primary School
16. Laycock Primary School
17. Montem Primary School
18. Moreland Primary School and Children's Centre
19. Newington Green Primary School
20. Pakeman Primary School
21. Pooles Park Primary School
22. Prior Weston Primary School and Children's Centre
23. Robert Blair Primary School and Children's Centre
24. Rotherfield Primary School
25. Sacred Heart Catholic Primary School
26. St Andrew's (Barnsbury) CE Primary School
27. St Joan of Arc Catholic Primary School
28. St John Evangelist Primary School
29. St John's Highbury Vale Primary School
30. St John's Upper Holloway CE Primary School
31. St Joseph's Catholic Primary School and Nursery
32. St Jude and St Paul's CE Primary School
33. St Luke's CE Primary School
34. St Mark's CE Early Years and Primary School
35. St Mary Magdalene Academy
36. St Mary's Islington CE Primary School
37. St Peter and St Paul Catholic Primary School
38. The New North Academy
39. Thornhill Primary School
40. Tufnell Park Primary School
41. Vittoria Primary School
42. Whitehall Park School
43. William Tyndale Primary School
44. Winton Primary School
45. Yerbury Primary School



Welcome

Providing good quality schools and educational opportunities for Islington's young people is a top priority for the borough. We are passionate about supporting children and young people to have the best start in life. At the heart of that ambition lies providing high-quality learning.

Islington's primary schools have a lot to be proud of, with 98% of them being judged as good or outstanding by Ofsted. What's more, the percentage of the borough's pupils achieving the expected standard remains above the national average at both Key Stage 1 and Key Stage 2. Our ambition is for local schools to continue to improve through strong leadership, rigorous standards and creative teaching.

Our ambitious Education Plan sets out how we will ensure that every child, whatever their background, has the same opportunity and ambition to reach their educational potential in a good Islington school. All our schools can boast an outstanding enrichment offer – like music, the arts, sports and careers – which can help children open doors to new passions and interests, be more resilient and gain the knowledge and life skills they need for a fulfilling future.

There are three pillars to our enrichment programme: '11 by 11' seeks to give all young people equal access to the world-famous cultural opportunities on their doorstep; Music Education Islington is our partnership with Guildhall School of Music and Drama, which offers high-quality music education to all children and young people in Islington; 'World Of Work' is our careers education programme, providing students with access to businesses through career insights, workshops, visits and placements to improve awareness of good jobs and careers.

This is part of our commitment to a more equal Islington, and our ambition to make Islington the best place for young people to grow up, which is why we provide universal free school meals to all nursery and primary school pupils, aged three and above, in our schools. Free school meals have been shown to improve health and academic performance, help tackle health inequalities and support families with the cost of living, too.

This brochure outlines all the information you need to choose a primary school that is right for your child. If you need any help or advice about making an application, our School Admissions team is here to help. I wish your child every success for the first stage of their school journey.

Signature



Councillor Michelline Ngongo

Executive Member for Children, Young People and Families



Table of contents

Section 1: Before you apply	6
About schools in Islington	7
Dates to remember	8
Top tips before you apply	9
Our pledge to you	10
Section 2: How to apply	11
Apply online	12
About school applications	14
Admission criteria for community schools	20
Multiple birth siblings	23
Criteria flowchart	24
Table of school places	25
Section 3: What happens next?	28
What happens to your application?	29
Offer Day	30
Waiting lists and appeals	31
Junior admissions and applying during the school year	33
Fair access protocol	34
Section 4: Islington's Schools	35
Ambler Primary School and Children's Centre	36
Ashmount Primary School	37
Blessed Sacrament Catholic Primary School	38
Canonbury Primary School	39
Christ the King Primary School	40
City of London Primary Academy Islington	41
Drayton Park Primary School	42
Duncombe Primary School	43
Gillespie Primary School	44
Grafton Primary School	45
Hanover Primary School	46
Hargrave Park School	47
Highbury Quadrant Primary School	48
Hugh Myddelton Primary School	49

Hungerford Primary School _____	50
Laycock Primary School _____	51
Montem Primary School _____	52
Moreland Primary School and Children’s Centre _____	53
Newington Green Primary School _____	54
Pakeman Primary School _____	55
Pooles Park Primary School _____	56
Prior Weston Primary School and Children’s Centre _____	57
Robert Blair School _____	58
Rotherfield Primary School _____	59
Sacred Heart Catholic Primary School _____	60
St Andrew’s (Barnsbury) CE Primary School _____	61
St Joan of Arc Catholic Primary School _____	62
St John Evangelist Primary School _____	63
St John’s Highbury Vale Primary School _____	64
St John’s Upper Holloway CE Primary School _____	65
St Joseph’s Catholic Primary School and Nursery _____	66
St Jude and St Paul’s CE Primary School _____	67
St Luke’s CE Primary School _____	68
St Mary Magdalene Academy _____	70
St Mary’s Islington CE Primary School _____	71
St Peter and St Paul Catholic Primary School _____	72
The New North Academy _____	73
Thornhill Primary School _____	74
Tufnell Park Primary School _____	75
Vittoria Primary School _____	76
Whitehall Park School _____	77
William Tyndale Primary School _____	78
Winton Primary School _____	79
Yerbury Primary School _____	80
Section 5: Useful information and contacts _____	81
FIS, Bright Start and Free School Meals _____	82
Additional educational needs _____	83
Attendance matters: every day counts! _____	84
Getting to School _____	85
Glossary _____	86
Key information _____	90

Section 1: Before you apply



About schools in Islington

Top of the class!

Did you know that children in Islington primary schools performed better than the national average in every subject at Key Stages 1 and 2 in 2022? In our primary schools, pupils with Special Educational Needs achieved particularly well at Key Stage 2 in 2022, with a much higher proportion of pupils with SEND achieving the expected standard in Reading, Writing and Maths (RWM) compared to similar pupils nationally.

The aim of this brochure is to help you make an informed decision about which school will best suit your child. If you do need any extra information, please email us with your query at admissions@islington.gov.uk or call us on 020 7527 5515.

When does my child start school?

All children will be offered a full-time school place for the start of the school year in which they turn five. The expectation is that the place is taken up in September at the start of the school year.

Can I defer or delay my child's start in reception class?

You can opt to defer your child's start in reception class until later in the school year. Your child must however be in full-time education by the time they reach **compulsory school age** (the term after their fifth birthday). If you are thinking of deferring your child's school place, you should discuss this with the head teacher of the offered school before coming to a final decision.

Parents of [summer-born](#) children can opt to delay their child's admission to reception class until the following school year when the child reaches compulsory school age. If you are considering this option, please let the School Admissions team know as soon as possible. You will need to submit a written request asking to delay your child's admission to reception class. You will also need to submit a new admissions application the next year, and your existing application (or school place if already offered) will be withdrawn.

An early start to get ahead!

Whether part-time, or full time, early years' education has been shown to provide children with significant advantages in their educational outcomes. Until your child starts reception class, they are entitled to a funded early education place during term time (either 15 hours or 30 hours a week, depending on eligibility). For more information, please contact the [Family Information Service](#) on 020 7527 5959.

Dates to remember

Dates	What Happens
September 2023	You can apply online from 1 September 2023 to 15 January 2024 .
08 January 2024	Recommended application return date: submit your online application by this date. If you miss the deadline, your application will not be processed until after all on-time applications.
15 January 2024	Application deadline: this is the final date for you to submit your application online. We strongly recommend that you submit your application by 08 January 2024 .
15 January 2024	Exceptional social/medical application deadline: you must submit your application and supporting documentation by this date for it to be considered alongside all on-time applications.
16 April 2024	Offer day: you will receive your result by email after 5pm. Your child will receive an offer of a place at one school (single offer).
30 April 2024	Acceptance deadline: you must accept (or decline) your school place by this date. You can do this online.
18 May 2024	Second round of offers: declined offers are redistributed to other applicants on the waiting list in strict criteria order. Many applicants will be offered one of their higher preferences. The redistribution of declined offers continues until September.
22 May 2024	Appeal deadline: submit your online appeal for an Islington community school by this date. For other types of schools, please refer to the school's website. Remember, you can still appeal even if you have accepted a place at a different school.
July 2024	Waiting lists for schools outside Islington: Please check whether you need to submit an in-year application to remain on the waiting list of a school outside Islington.
31 December 2024	Islington school waiting lists: Your child's name will automatically be removed from all waiting lists. To add your child to a waiting list after this date, you will need to submit an in-year application .

Top tips before you apply



Do

1. Apply on time – only 40% of applicants who applied late were offered one of their preferred schools compared to 97% of on-time applicants.
2. Remember to apply even if your child attends the nursery of your preferred school. **There is no automatic entry to reception from nursery.**
3. If your child's older **sibling** attends your preferred school, **you must still apply.** *Please note that to qualify for admission under the 'sibling' criterion, the older child will still need to be on roll at the school in September.*
4. Visit schools – this is the best way to get a 'feel' for the school. You can meet a member of the leadership team, ask questions and see the school in action.
5. Think about what is right for your child – don't rely on what others tell you - visit the school and experience it first-hand.
6. Talk to your child – involve them as much as you can.
7. Think about the journey – how easy will it be to get to the school? A local school means your child can walk from home, benefitting their health and the environment.
8. Check the admission criteria and cut-off distance – how likely is it that your child will be offered a place? You can check by clicking on the link in the school fact file.
9. **Use all six preferences** – make sure you include at least one local school.
10. Ask the School Admissions team for advice – they can't tell you which schools to apply for, but they can explain the admission criteria and check whether you would have been offered a place the previous year.
11. Make sure you press '**submit**' when you finish your online application. You should then receive a reference number confirming safe receipt.



Don't

1. List private schools on your application – you should apply directly to fee-paying schools.
2. Wait until the last minute to apply – you may have a problem getting online or logging on. Give yourself plenty of time to think things through carefully.
3. List only one school – your application will not be treated more favourably, and you could lose out on another school you like.

Our pledge to you

Islington Council is committed to providing quality customer service. We make the following promise to everyone who lives, works in, or visits the borough:

- We will be fair in the way we deliver services and treat everyone equally, with courtesy and respect.
- We will provide polite, welcoming, and efficient services that are accessible to all.
- We will provide helpful information and secure transactions on our website.
- We will answer our phones quickly and endeavour to deal with your enquiry or issue during your first call. If we can't, we will call you back the next working day.
- We will respond to your emails and letters in plain English within ten working days.
- We will respond to your complaints within 21 days.
- We will seek your feedback on the services we provide and publish the results on our website.

**Don't forget –
apply online by 15
January 2024**

Section 2: How to apply



Apply online

If you live in Islington, you need to apply using [Islington's online application form](#).

When can I apply?

You can apply from **1 September 2023** until Monday **15 January 2024**. Applications made by the deadline are 'on-time' and will be processed before 'late' applications made after this deadline.

We strongly recommend that you submit your application by Thursday **08 January 2024** in case there are any issues with submitting your application (e.g., problems with internet access, forgotten username or password etc.).

Why apply online?

1. You can do your application in stages. You can review the order of schools listed, and other information as many times as you want before you submit your online application.
2. The online system checks for errors or missing information.
3. The system is secure, and your information is safe.
4. A reference number is sent to your registered email confirming safe receipt of your application.
5. There is no need to pay for postage.

How do I get started?

You will need an email address. You can register for a free email account with a number of providers. The London e-Admissions system recommends Gmail. [Create an account](#).

For instructions about how to create an email address, watch this handy [YouTube](#) tutorial.

I have an email address, what next?

Register your email address on the [London e-Admissions portal](#). Once you have done this, you will receive an email explaining how to make your application.

When do I find out which school has been offered?

National Primary Offer Day is **16 April 2024**. In the evening:

- you will receive an email telling you which school has been offered

OR

- you can log on to the London e-Admissions system to view your offer online.

Who can help me with the online application?

The School Admissions team can offer telephone advice and talk you through the online application.

The team can also offer one to one support from 222 Upper Street. Please call **020 7527 5515** to arrange an appointment.

For technical queries and assistance, please contact the London e-Admissions helpdesk:

E: www.eadmissions.org.uk/support/

T: 020 8255 5555 (Option 1)

ParentComms

Why not sign up for ParentComms? Using the app, you will be able to receive the outcome of your application on your mobile device. You can download the free ParentComms app from the [Apple AppStore](#), [Google Play](#) or [Windows Phone Store](#) by registering your username and password. You will receive reminders about the closing date and any pending applications that need to be submitted by the deadline.

Make a note!



Please make a note of the following details as you will need this information to access your application, and offer in April:

Application Reference Number: _____

Username: _____

Password: _____

**Don't forget –
apply online by 15
January 2024**

About school applications

What you need to know

1. How do I apply?

You **must** apply to the local authority where your child lives. Click on this link to apply: [London E-admissions application form](#).

2. Do I need to apply if my child is already attending the nursery class of the school where I would like them to stay on?

Yes, you **must** apply even if your child attends the nursery class as there is no guarantee they will get a place in the school's reception class. **If you don't apply, your child may be left without a school place.**

3. Do I need to apply if my child has an older sibling at the school already?

Yes, you **must** apply even if your child's older sibling attends your preferred school. Please note that to qualify for admission under the 'sibling' criterion, the older child will still need to be at the school when your younger child is due to start reception class in September. **If you don't apply, your child may be left without a school place.**

4. How many schools can I pick?

You can list up to **six schools**. These schools can be in Islington or in another local authority. Please note that although you can list up to six schools, you will receive only **one** offer.

5. Have I got more chance of getting the school I want if I only list that school?

There is no advantage in listing only one or two schools. In fact, we highly recommend that you pick six schools, and include a local school.

6. Is my first preference given higher priority?

Each of your schools is considered separately, without the preference position being taken into account. This process is known as the '[Equal Preference](#)' scheme.

This means that first and sixth preferences are processed in the same way.

Your child will **not** get higher admission priority if you list a school as a first preference, and your preference order is **never** disclosed to schools.

7. So, why ask me to list schools in the order I prefer?

Preference order only comes into play **if** your child qualifies for admission to more than one of your preferred schools.

For example, if your child lives within the '[cut-off](#)' distance for two or more schools, the application system (**PLR**) automatically offers the highest preference possible.

So, if your child is eligible for a place at both your first and fifth preference schools, the system will select the highest preference possible, which in this case is your first preference school. This is why you should list schools in the order you most prefer, with your favourite school first as you will only receive one school offer.

8. So why not offer my child more than one school if this happens?

Only **one** offer can be made to each child. This is to make sure that every child receives an offer of a school place on Offer Day. It wouldn't be fair for some children to receive two or three offers while others get none.

9. What happens to my other preferences?

All lower preferences are put back into the system so they can be offered out to other children.

So, if your child receives an offer at your third preference school, lower preferences are put back into the system and your child is automatically placed on the waiting lists of all your higher preference schools.

This means that if a place becomes available at your first preference school, we will contact you to make that offer.

10. How do you decide who gets a place at which school?

Every school must say how places will be allocated if there are more applications than places available. This is done by applying rules – referred to as [admission criteria](#) or **oversubscription criteria**.

11. How do I know what the admission criteria are?

Every school must publish this information on their website. It's really important that you read and understand the [admission criteria](#) so you can make informed decisions about which schools to apply for.

All schools use distance as a way of prioritising applicants. However, other applicants are given higher priority as some schools prioritise siblings or children of a particular faith.

If you need help with understanding the [admission criteria](#), the School Admissions team can help.

11. Can I get advice on which schools I should choose?

We can't give advice on which schools to pick as this is a personal matter, but we do advise you to:

- Visit the schools you are interested in so you can meet the staff, ask questions and, get a 'feel' for the school.
- List at least one of your nearest schools as a preference. Although there is no guarantee of a place at a local school, it is true to say that your child is more likely to get a place there as the majority of applicants are admitted under the '[distance criterion](#)', which gives priority to children living closest to the school.

12. What happens if it isn't possible to offer a place at one of my preferred schools?

We will reserve a place at your child's nearest Islington school with a vacancy and provide you with a list of all schools in the borough that still have places. You can accept the school offered or choose an alternative.

Your child will also remain on the waiting lists of all your preferred schools and if a place becomes available, we will contact you to make the offer. We will also make a second round of offers a few weeks after the acceptance/decline deadline so you may get a preferred school after all. **Don't risk being left without a school place.**

13. Can I list private schools on the form?

No. You need to apply for a place directly with fee-paying schools using their application form.

14. What about faith schools?

Yes, you can list these on the application form but you need to check whether you need to provide additional information on their [Supplementary Information Form \(SIF\)](#). For Islington faith schools, you can check this in the school's fact file in section four of this brochure.

15. When do I need to make a final decision?

You must submit your online application by **15 January 2024** for it to be on-time. By applying online, you can change the order of your preferences right up until the deadline.

Remember to press **submit** when you have made your final decision. Make sure you apply by midnight on **15 January 2024**.

If your application is late the chances of getting a place at one of your preferred schools is likely to be reduced.

16. I am finding this stressful. Who can help me?

We understand that this is a difficult time for you, with lots of different things to consider. The School Admissions team is on hand to help. Do contact us and we will do our very best to assist you.

T. 020 7527 5515

E. admissions@islington.gov.uk

Application address

The address that we will use to process your application will be your child's permanent address on **15 January 2024**. We can only use one address. This must be the official address where your child spends most of their time Monday to Friday. We are unable to use a future or intended address for the purpose of school admissions.

Please note that we may not accept a temporary address if you still possess a property that was previously used as a home address; nor accept a temporary address if it is used solely or mainly to obtain a school place.

We may also carry out additional checks with the new school to see whether the child's home address has changed since the application was completed and will investigate all applications where:

- there are any doubts about the information originally provided
- information has been received from a member of the public to suggest misleading information has been provided and a fraudulent application made
- the council tax account is in a different name to the applicant.

The provision of false or misleading information will result in the school place being withdrawn and may lead to prosecution.

Whistleblowing

Islington Council takes a firm stand against any attempt to obtain a school place by fraud. If you provide false or deliberately misleading information whilst completing a school admissions application or use a temporary address intentionally for the purpose of gaining an advantage over other applicants, your application will become void.

If you know someone who intends to use, or has used, a false address to obtain a school place, you can report this confidentially to the Islington School Admissions team on 020 7527 5515 or email admissions@islington.gov.uk.

Shared parental responsibility

If parents live separately, but the child lives equally with both, then it is the parents' responsibility to make this clear at the time of the application and to provide supporting evidence in respect of both addresses, for example, a Residency Order from a court.

Please note that only one address can be used for school admission purposes and the final decision will rest with the Islington School Admissions team.

Proof of address

Please provide your **council tax reference number** (you can find this on your council tax bill) so we can verify your address. If you can't provide this, please provide a copy of your most recent rent, mortgage statement or tenancy agreement.

If you can't obtain these documents, please provide at least two alternative documents. For example: utility bill; bank statement; GP, hospital, dentist or optician letter.

We also require proof that the child you are applying for lives with you. Therefore, please provide a copy of your most recent child benefit or family tax credit letter which clearly states your child's name and address.

If you don't receive child benefit or family tax credit, please provide at least two alternative documents to prove your child lives with you. For example: a letter from your child's GP, dentist, hospital, optician; or the page within your child's health record book that has his/her name and address.

Please ensure that copies of documents provided are not older than 12 months. Documents can be uploaded with your online admissions application. If we require further information, we will contact you. **Don't delay submitting your application if you don't have the appropriate proofs of address as we can offer advice on what to do next.**

Change of address

If your child moves after **15 January 2024**, then please provide a copy of the documents listed above. This is to ensure your application is handled correctly.

Children of UK service personnel or crown servants

If you, or your partner, are a serving member of UK forces with a confirmed posting to Islington, or a crown servant returning from overseas, we will use the posting address provided by your employer if you provide us with documentary supporting evidence of your relocation date and Islington address.

There is no guarantee that a place will be available at your preferred school; each application will be considered in line with the school's [admission criteria](#). If an offer can be made, then that place may be held for a reasonable period, depending on individual circumstances.

If we can't offer your child a place at your preferred school, then we will in advance of your return, allocate the nearest Islington school to your home address that has a place available. Where your child is first on the waiting list, we will ask the school to go over number and admit your child as an 'excepted' pupil in line with provisions in the School Admissions Code.

Late applications

If we receive your application after **15 January 2024** then your application will be late. This means it will not be considered until we have allocated school places for all on-time applications. This could reduce your chances of getting a place at the school you want.

If there are exceptional reasons why it was not possible to make your application by the deadline, please email us at admissions@islington.gov.uk providing any supporting documentation.

Privacy Notice

London Borough of Islington will handle the information you have provided in line with the provisions of the General Data Protection Regulation (GDPR) 2018. Any personal information will be held in confidence with only the necessary people able to see or use it. For more information about how we process personal data about you or your child, please refer to our [Privacy Notice](#).

Admission criteria for community schools

Children with an Education, Health and Care Plan (EHCP)

If your child has an EHCP, they will be admitted to the school named in the EHCP. Please contact your SEND Keyworker for further information.

Oversubscription criteria

When more applications are received than there are places available, the following criteria will be used to decide which pupils are offered a place at an Islington community school in the order listed below:

1. [Children looked after / Previously looked after](#)

This refers to children who are in the care of a local authority and children who have been adopted (or made subject to a Child Arrangements Order or Special Guardianship Order) immediately after being looked after, including those who appear to have been in state care outside of England. **Please refer to the [Glossary](#) in Section 5 for full details.**

2. [Siblings](#)

A sibling is defined as a brother or sister, half-brother or sister, stepbrother or sister or adopted brother or sister, whose main residence is at the same address. This criterion will apply to applicants with a sibling living at the same address who is on the roll of the preferred school (reception class to year 6), or co-located Special School, at the time of the proposed admission in the new academic year.

3. **Exceptional social/medical needs**

The Director of Children's Services, on an individual basis, may give priority to applicants who can demonstrate that admission to a particular school is necessary on the grounds of professionally supported **exceptional** medical, social or special educational needs. Parents must supply details of any such special factors at the time of the original application (together with recent supporting documentation), to enable these factors to be considered.

If your child has an exceptional social (for example child protection/safeguarding issues) or medical need (for example if your child requires wheelchair access) to attend a specific Islington community school, then please provide professional evidence (e.g. from a doctor or educational psychologist) and complete our [social/medical application form](#) explaining why this is the only school that can meet your child's needs. Please return the form by **15 January 2024**.

Your case will be considered by a panel comprising senior admissions officers and SEND specialists. The panel will consider the evidence presented and consult relevant professionals as necessary to determine:

- a. whether your child has an exceptional social or medical need and
- b. whether this need can only be met at a specific school.

Please note late applicants applying under social/medical criterion can be prioritised only on the waiting list.

4. Distance

Applicants will be prioritised by distance (starting with the nearest). Nearness to schools is measured on a computerised mapping system using a straight-line distance measurement. Routes will be calculated from the home address (as defined by the Land and Property Gazetteer) to the midpoint of the school grounds (as determined by the London Borough of Islington).

Tie breaker

Distance will be used as a tiebreaker for criteria 1, 2 and 3. If only one place is available and two or more children live an equal distance from the school, the child who will be offered the place will be determined by random allocation using a computerised system.

How we calculate home to school distances

We use the Capita ONE system to calculate the distance from your child's home (the start point) to the school (the end point). This system calculates the distance in miles to three decimal places. The routing database system uses two dimensional maps. This means it does not take into account any contours or terrains.

The start point (applicant's home)

For calculation purposes, Islington Council uses the National Land and Property Gazetteer (NLPG) database to determine the start point for Islington addresses. The starting points for other addresses are provided by your home local authority. Calculations are based on the assumption that the child's home address is classified at the point of application as a residential property.

If you live in a block of flats where you use a communal entrance, we will use the NLPG point for the block and not the centroid of your individual flat for the distance calculation.

The end point (school)

The centre of the school grounds is used as the end point for home to school distance as defined by Islington Council.

Please note that you can't compare distances produced on Islington's Capita ONE system to those calculated using any personal or online geographical information system software you may have access to such as satellite navigations systems or Google maps.

Islington residents can obtain an approximate distance measurement to any Islington school using the following link: [calculate your home to school distance](#).

Alternatively, you can call the School Admissions team for an approximate measurement on 020 7527 5515.

Cut-off distance

Cut-off distances vary from year to year and are given only as a guide to help you assess the likelihood of being offered a place under the distance criterion.

Please note that living within the previous year's cut-off distance doesn't guarantee your child a place at the school.

Multiple birth siblings

Key Stage 1

If only one place is available at the school in reception class, Year 1 or Year 2 and the next child who qualifies for a place is one of multiple-birth siblings or has a sibling who is eligible for admission in the same year group, schools will go over their published admission number to support the family. These children will be deemed 'excepted' pupils under KS1 class size legislation.

Key Stage 2

For pupils in Years 3-6, if only one place is available at the school and the next child who qualifies for a place is one of multiple birth siblings or has a sibling who is eligible for admission in the same year group, we will ask community schools to admit the siblings and go over their published admission number to support the family.



**Don't forget –
apply online by 15
January 2024**

Criteria flowchart

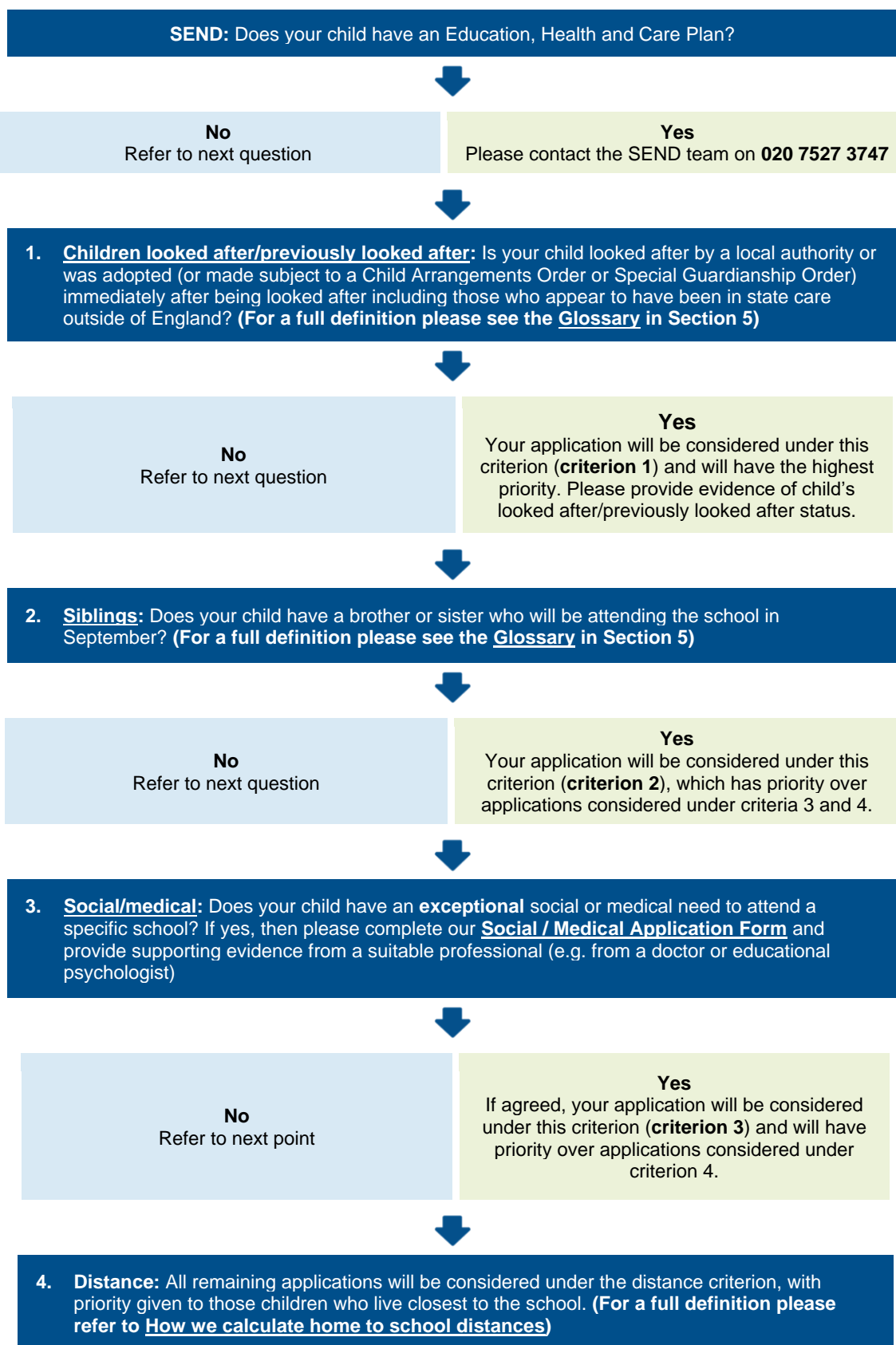


Table of school places

The table below provides a summary of information for Islington primary schools for last year's admission round (admission in September 2023).

A. Name of school	B. School type	C. Published admission number (PAN)	D. Applications received	E. First preference applications received	F. Total offers made	G. EHCP offers made via SEN process	H. LAC/PLAC criterion offers	I. Sibling criterion offers	J. Social medical criterion offers	K. Other criteria offers	L. Distance criterion offers	M. Alternative offers *	N. Cut off Distance (miles)	O. Appeals lodged	P. Appeals upheld
Ambler	Community	60	326	72	60	0	0	23	1	N/A	36	0	0.393	2	0
Ashmount	Community	60	218	53	60	0	0	18	1	N/A	41	0	0.828	0	0
Blessed Sacrament	Voluntary Aided	30	23	8	10	0	0	6	0	Faith: 0	4	0	Does not apply	0	0
Canonbury	Community	60	282	51	60	0	0	23	1	N/A	36	0	0.452	1	0
Christ The King	Voluntary Aided	45	62	28	29	0	0	13	4	Faith: 4	8	0	Does not apply	0	0
COLPA-I	Academy	60	148	64	60	0	0	14	0	Children of Staff: 0	46	0	0.57	2	0
Copenhagen	Community	30	50	10	12	0	0	8	0	N/A	4	0	Does not apply	0	0
Drayton Park	Community	45	149	27	45	0	0	10	0	N/A	32	3	Does not apply	0	0
Duncombe	Community	60	86	22	26	1	0	14	0	N/A	9	2	Does not apply	0	0
Gillespie	Community	30	253	57	30	1	0	15	0	N/A	14	0	0.148	0	0
Grafton	Community	60	205	57	60	0	0	22	0	N/A	38	0	0.457	1	0
Hanover	Community	45	114	34	45	0	0	16	0	N/A	29	0	0.370	1	0
Hargrave Park	Community	45	110	33	35	0	0	13	0	N/A	21	1	Does not apply	0	0
Highbury Quadrant	Community	45	68	21	30	0	1	9	0	N/A	13	7	Does not apply	0	0
Hugh Myddelton	Community	60	241	81	60	1	1	26	2	N/A	30	0	0.466	1	0
Hungerford	Academy	60	32	17	17	0	0	9	0	N/A	8	0	Does not apply	0	0
Laycock	Community	50	113	24	30	1	0	11	0	N/A	17	1	Does not apply	0	0
Montem	Community	60	85	25	29	2	0	11	0	N/A	13	3	Does not apply	0	0
Moreland	Community	60	135	51	60	5	0	20	0	N/A	31	4	Does not apply	1	0
Newington Green	Community	60	116	46	59	2	0	29	0	N/A	23	5	Does not apply	0	0

A. Name of school	B. School type	C. Published admission number (PAN)	D. Applications received	E. First preference applications received	F. Total offers made	G. EHCP offers made via SEN process	H. LAC/PLAC criterion offers	I. Sibling criterion offers	J. Social medical criterion offers	K. Other criteria offers	L. Distance criterion offers	M. Alternative offers *	N. Cut off Distance (miles)	O. Appeals lodged	P. Appeals upheld
Pakeman	Community	45	92	34	39	0	1	12	0	N/A	22	4	Does not apply	0	0
Pooles Park	Community	45	52	21	21	0	0	11	0	N/A	10	0	Does not apply	0	0
Prior Weston	Community	60	59	20	21	0	0	6	1	N/A	14	0	Does not apply	0	0
Robert Blair	Community	30	53	19	30	0	0	7	1	N/A	16	6	Does not apply	1	0
Rotherfield	Community	60	73	24	30	0	0	10	0	N/A	15	5	Does not apply	1	0
Sacred Heart	Voluntary Aided	60	100	46	51	1	2	6	0	Faith: 33	9	0	Does not apply	0	0
St Andrew's Barnsbury	Voluntary Aided	30	50	18	23	0	0	11	N/A	Faith: 1	11	0	Does not apply	0	0
St Joan of Arc	Voluntary Aided	60	171	48	60	0	1	23	N/A	Faith: 19	17	0	0.33	0	0
St John Evangelist	Voluntary Aided	40	72	24	30	0	0	6	0	Faith: 19 Children of Staff: 0	5	0	Does not apply	0	0
St John's Highbury Vale	Voluntary Aided	30	150	26	30	0	1	10	1	Faith: 3 Children of Staff:0	15	0	0.21	0	0
St John's Upper Holloway	Voluntary Aided	30	72	23	30	0	1	14	0	Faith: 0	15	0	0.990	0	0
St Joseph's	Voluntary Aided	60	121	52	59	0	0	8	0	Faith: 29	22	0	Does not apply	0	0
St Jude and St Paul's	Voluntary Aided	30	28	10	11	1	0	5	N/A	Faith: 0	5	0	Does not apply	0	0
St Luke's	Voluntary Aided	30	57	18	19	1	1	6	N/A	Faith: 1 Children of Staff: 0	11	0	Does not apply	0	0
St Mark's	Voluntary Aided	30	77	34	30	0	1	8	N/A	Faith: 4	17	0	0.33	0	0
St Mary Magdalene Academy	Academy	30	131	43	30	0	0	11	N/A	Faith: 9 Children of Staff: 1	9	0	0.184	2	0
St Mary's Islington	Voluntary Aided	30	67	13	22	1	0	6	N/A	Faith: 1	15	0	Does not apply	0	0
St Peter and St Paul	Voluntary Aided	30	48	18	18	0	1	9	0	Faith: 6	2	0	Does not apply	0	0
The New North Academy	Academy	45	72	30	33	1	0	16	0	Children of Staff: 0	16	0	Does not apply	0	0
Thornhill	Community	60	223	67	60	0	0	23	0	N/A	37	0	0.364	1	0

A. Name of school	B. School type	C. Published admission number (PAN)	D. Applications received	E. First preference applications received	F. Total offers made	G. EHCP offers made via SEN process	H. LAC/PLAC criterion offers	I. Sibling criterion offers	J. Social medical criterion offers	K. Other criteria offers	L. Distance criterion offers	M. Alternative offers *	N. Cut off Distance (miles)	O. Appeals lodged	P. Appeals upheld
Tufnell Park	Community	90	175	41	65	0	0	21	1	N/A	43	0	Does not apply	0	0
Vittoria	Community	30	23	12	12	0	0	8	0	N/A	4	0	Does not apply	0	0
Whitehall Park	Free School	60	119	28	31	0	0	18	N/A	Children of Staff: 0	13	0	Does not apply	0	0
William Tyndale	Academy	60	385	145	60	1	1	26	0	Children of Staff: 1	31	0	0.198	8	0
Winton	Community	30	72	25	30	0	0	15	0	N/A	15	0	1.409	0	0
Yerbury	Community	60	237	87	60	0	0	24	0	N/A	36	0	0.321	4	0

Notes

*M: Applicants who did not receive an offer at one of their stated preferences were reserved a place at their nearest Islington community school with a vacancy in line with the Council's published admissions policy.

Section 3: What happens next?



What happens to your application?

All London boroughs and some councils bordering London are part of the pan-London school admissions scheme. This makes applying for school places in the capital fairer and simpler.

How does it work?

A secure computer system is used to exchange information between councils when residents apply for schools outside the borough where they live.

Equal Preference

Every school you apply for is considered at the same time and your order of preference is kept confidential.

If your application meets the criteria for more than one school, you will be offered the highest preference possible and all lower preferences will be withdrawn and released to other children. So, make sure you put the school you really want first as you will only receive one offer on National Offer Day.

Each school has a set number of available places – check the school’s fact file for details.

Admission Criteria

Where a school receives more applications than there are places available (i.e. it is oversubscribed) its published [admission criteria](#) will be used to decide which pupils will be offered the places. Each school’s Fact File in this brochure provides a link to the admission criteria. A summary of last year’s results is provided in the [Table of school places](#).

Offer Day

You will be informed of the outcome of your application on National Offer Day, **16 April 2024**. You can log onto eAdmissions from 5pm to find out the outcome of your application. You will also receive an email informing you of your result.

Please accept the place online by **02 May 2024**.

If you are an Islington resident and we can't offer your child a place at any school listed on your application, we will reserve a place at your nearest Islington school with an available place.

We will also inform you of where there are other vacancies to enable you to apply for alternative schools.

Second round of offers

A second round of offers will be made on **18 May 2024** following completion of the acceptance and decline process. Any places declined from the first round of offers on national Offer Day are put back into the system for redistribution to other applicants. These offers are made in line with each school's published admission criteria.

The positive news is that by September many applicants are offered a higher preference school.

Waiting lists and appeals

Waiting lists

Islington schools: Your child's name will automatically be placed on the waiting list of any school listed as a higher preference on your original application than the school place offered.

Your child will remain on the waiting list until **31 December 2024**. After this date, **your child's name will be removed from all waiting lists**. To add your child to a waiting list, you will need to complete a fresh application form using Islington's online [In-year School Admissions Application](#).

Schools outside Islington: Please check whether you need to submit an in-year application to remain on the waiting list of a school outside Islington. In some local authorities, children are removed from waiting lists in July, and you may need to submit an in-year application form for your child to remain on school waiting lists. For further information, please contact the local authority where the school is located.

Please note:

- being on a waiting list will not guarantee a place at your preferred school
- your child's waiting list position can go down as well as up
- waiting list positions are considered strictly in accordance with the school's published [admission criteria](#) and are not affected by acceptance of a lower preference offer.

You can accept the place offered, remain on the waiting list of any higher preference school and lodge an appeal all at the same time.

Right of appeal

You have the right of appeal under the School Standards & Framework Act 1998 against the refusal of a place at any of the schools listed on your application.

An independent panel will hear your appeal and their decision is binding for both the Admission Authority and the school(s). The panel will be made up of people who have experience in education and lay members (people without personal experience of school management or the provision of education).

How do I lodge an admission appeal?

For Islington community schools, use this link to [appeal a school decision](#) by **22 May 2024**.

For other schools, contact the school directly to obtain an appeal form. The completed form should be returned to the school by the date given to you.

When will the appeal take place?

Provided you lodge your appeal for an Islington community school by the deadline above, your appeal will be heard in **June or July 2024**.

What does the appeal panel consider?

The appeal panel can only uphold an appeal (i.e., offer a school place) where:

1. The admission arrangements don't comply with legal requirements set out in the [School Admissions Code](#) and the [School Standards and Framework Act \(SSFA\) 1998](#)
2. The admission arrangements were not correctly or impartially applied
3. The decision to refuse admission was unreasonable given the circumstances of the case.

The panel must then decide whether the admission of additional children would prejudice the provision of efficient education or the efficient use of resources.

Class size

The law states that children in reception class (and in years 1 and 2) must not be taught in classes of more than 30 pupils with only one school teacher. This legislation will be taken into account in admission appeals.

Appeal a school decision

Junior admissions and applying during the school year

Junior admissions

In most primary schools, children transfer from year 2 to year 3 automatically. If your child attends an Islington primary school, then the transfer will be automatic.

However, there are some primary schools in other local authorities where the junior school is separate to the infant school. If this is the case, Islington residents will need to complete our online [Junior Admissions Application](#)

If you don't live in Islington, please contact your local council.

You must submit your online application by **15 January 2024** for it to be on-time. After this date your application will be late and the chances of getting a place at your preferred school may be reduced.

You will be notified of the result of your application in the evening of the **16 April 2024**.

Please contact the School Admissions team on 020 7527 5515 for further advice.

Applying during the school year

If you are an Islington resident applying for a primary school place and your child is not due to start reception in **September 2024**, use our [In-Year School Admissions Application Form](#).

You can apply for up to **three** schools.

If you live in another borough, you can also apply for an Islington school using our online form.

Waiting lists

Please note that waiting lists are cleansed each term. If you wish to remain on the waiting list, please inform the school concerned before the start of the new term.

Fair access protocol

All local authorities are required to have a 'Fair Access Protocol' to ensure that **unplaced and vulnerable children, and those who are having difficulty in securing a school place in-year**, are found suitable education provision as quickly as possible. If there are no vacancies in any Islington schools, we may ask schools to go over their published admission number except at Key Stage 1 (reception and years 1 and 2) due to infant class-size legislation.

The following children who are unplaced, vulnerable or who are having difficulty securing a school place in-year **may** be eligible for admission under **Islington's Fair Access Protocol**:

- a) Children subject to a Child in Need Plan or a Child Protection Plan within the last 12 months
- b) Children living in a refuge or in other Relevant Accommodation
- c) Children from the criminal justice system
- d) Children who have been permanently excluded or those deemed suitable for reintegration to mainstream education from pupil referral units
- e) Children with special educational needs (but without an Education, Health and Care plan), disabilities or medical conditions
- f) Children who are carers
- g) Children who are homeless
- h) Children in formal kinship care arrangements
- i) Children of Gypsies, Roma, Travellers, refugees, and asylum seekers
- j) Children who have been refused a place due to their challenging behaviour
- k) Children for whom a place has not been sought due to exceptional circumstances
- l) Children who have been out of education for four or more weeks and
- m) Previously looked after children for whom the local authority has been unable to secure a school place promptly.

Applications for school places under [Islington's Fair Access Protocol](#) are considered by a multi-agency panel which decides whether pupils should be admitted under the protocol, and which schools should be allocated. Schools are allocated on a 'fair share' basis to ensure no individual school takes a disproportionate number of children under the protocol. Therefore, parental preference may not always be met. For further information, please contact the School Admissions team on 020 7527 5515 or refer to [Islington's Fair Access Protocol](#).

Section 4: Islington's Schools

Please check schools' websites for the latest information on tours and Open Days.



Ambler Primary School and Children's Centre

Fact file

Head Teacher: Sandeep McNicholl

Address: Blackstock Road, N4 2DR

[Ambler Primary School map](#)

Bus routes: 4, 19, 29, 106, 210, 236, 253, 259, W4, W7

Nearest station: Finsbury Park



Type of School:	Mixed Community
Age range:	0 - 11
Total number of places available at the school (YR-Y6):	420
Number of places available in reception class:	60
School start and finish times:	8.55am - 3.30pm
Accessibility:	Ground floor access only
DfE Code:	206/2015
Ambler Primary School admissions criteria	
Last pupil admitted under distance criterion in Sept 2023:	0.393 miles
Calculate your home to school distance	
For more information	
Website: www.amblerprimaryschool.co.uk	
Contact name for enquiries: Gary Wong	
Email: office@ambler.islington.sch.uk	
Tel: 020 7226 4708	
Twitter: @AmblerSchool	
Does the school have two-year-old provision?	Yes
Does the school have a nursery class?	Yes
Does the school have a breakfast club?	Yes
Does the school have any after-school childcare?	Yes
Does the school have a uniform?	Yes
Visiting dates:	First Thursday of every month at 10.30am

Ashmount Primary School

Fact file

Head Teacher: Anthony Carmel

Address: Crouch Hill Park, 83 Crouch Hill, N8 9EG

[Ashmount Primary School map](#)

Bus routes: 91, W7, 41

Nearest stations: Finsbury Park (Tube), Crouch Hill (Overground)



Type of School:	Mixed Community
Age range:	3 - 11
Total number of places available at the school (YR-Y6):	420
Number of places available in reception class:	60
School start and finish times:	8.45am (soft start) - 3.15pm
Accessibility:	Fully accessible building with lift
DfE Code:	206/2809
Ashmount Primary School admissions criteria	
Last pupil admitted under distance criterion in Sept 2023:	0.828 miles
Calculate your home to school distance	
For more information	
Website: www.ashmountprimaryschool.co.uk	
Contact name for admission enquiries: Mary McGreal	
Email: office@ashmount.islington.sch.uk	
Tel: 020 7272 7145	
Twitter: @AshmountPrimary	
Does the school have two-year-old provision?	No
Does the school have a nursery class?	Yes
Does the school have a breakfast club?	Yes
Does the school have any after-school childcare?	Yes – onsite facilities
Does the school have a uniform?	Yes
Visiting dates:	First and last Thursday of every month at 9.30am (contact the school to arrange a visit)

Blessed Sacrament Catholic Primary School

Fact file

Head Teacher: Alexandra Fernandez-Madden

Address: Boadicea Street, N1 0UF

[Blessed Sacrament Catholic Primary School map](#)

Bus routes: 10, 17, 91, 259, 274, 390

Nearest stations: King's Cross and Caledonian Road



Type of School:	Mixed Voluntary-aided Catholic
Age range:	3 - 11
Total number of places available at the school (YR-Y6):	210
Number of places available in reception class:	30
School start and finish times:	8.45am (soft start) - 3.30pm
Accessibility:	Fully accessible building
DfE Code:	206/3643
Blessed Sacrament Catholic Primary School admissions criteria	
Blessed Sacrament Catholic Primary School Supplementary Information Form (SIF)	
Distance of last pupil admitted under the final criterion (distance) in Sept 2023:	Does not apply
Calculate your home to school distance	
For more information Website: www.blessedsacrament-islington.co.uk Contact name for admission enquiries: Jackie Payne Email: admin@blessedsacrament.islington.sch.uk Tel: 020 7278 2187 Twitter: @BlessedPrimary	
Does the school have two-year-old provision?	No
Does the school have a nursery class?	Yes
Does the school have a breakfast club?	Yes
Does the school have any after-school childcare?	Yes
Does the school have a uniform?	Yes
Visiting dates:	Please contact the school to arrange a visit

Canonbury Primary School

Fact file

Head Teacher: Patrick Mildren

Address: Canonbury Road, N1 2UT

[Canonbury Primary School map](#)

Bus routes: 4, 19, 21, 30, 43, 263, 393

Nearest station: Highbury and Islington



Type of School:	Mixed Community
Age range:	3 - 11
Total number of places available at the school (YR-Y6):	420
Number of places available in reception class:	60
School start and finish times:	8.45am (soft start) - 3.15pm (Nursery and Reception) 3.25pm (KS1) 3.30pm (KS2)
Accessibility:	Disabled access to ground floor only
DfE Code:	206/2854
Canonbury Primary School admissions criteria	
Last pupil admitted under distance criterion in Sept 2023:	0.452 miles
Calculate your home to school distance	
For more information	
Website: www.canonburyprimaryschool.co.uk	
Contact name for admission enquiries: Sarah Ouldcott – Office Manager	
Email: Sarah.ouldcott@canonbury.islington.sch.uk	
Tel: 020 7226 5020	
Twitter: @CanonburySchool	
Does the school have two-year-old provision?	No
Does the school have a nursery class?	Yes
Does the school have a breakfast club?	Yes
Does the school have any after-school childcare?	Yes
Does the school have a uniform?	Yes
Visiting dates:	Please see the school website for details or contact the school to arrange a visit

Christ the King Primary School

Fact file

Executive Head Teacher: Mr John Lane
Deputy Head Teacher: Tracy Lane
Assistant Head Teacher: Kayleigh Sumsion
Address: 55 Tollington Park, N4 3QW
[Christ the King Primary School map](#)
Bus routes: 4, 19, 46, 210, 271, W3, W7
Nearest station: Finsbury Park



Type of School:	Mixed Voluntary-aided Catholic
Age range:	3 - 11
Total number of places available at the school (YR-Y6):	390
Number of places available in reception class:	45
School start and finish times:	8.50am - 3.30pm (Soft start 8.40)
Accessibility:	Fully accessible
DfE Code:	206/3633
Christ the King Primary School admissions criteria	
Christ the King Primary School Supplementary Information Form (SIF)	
Distance of last pupil admitted under final criterion (distance) in Sept 2023:	Does not apply
Calculate your home to school distance	
For more information Website: www.ctks.co.uk Contact name for admission enquiries: Nichola Beveridge Email: admin@ctks.co.uk Tel: 020 7272 5987 Twitter: @ctks_islington	
Does the school have two-year-old provision?	No
Does the school have a nursery class?	Yes
Does the school have a breakfast club?	Yes – from 8.00am
Does the school have any after-school childcare?	Yes – until 6.00pm
Does the school have a uniform?	Yes
Visiting dates:	Please contact the school to arrange a tour/visit

City of London Primary Academy Islington

Fact file

Head Teacher: Ms Kim Clapham

Address: 15 Baltic Street West, EC1Y 0AE

[City of London Primary Academy Islington map](#)

Bus routes: 4, 55, 56, 153 and 243

Nearest stations: Barbican



Type of School:	Mixed Academy
Age range:	4 - 11
Total number of places available at the school (YR-Y6):	420 at full capacity in 2024
Number of places available in reception class:	60
School start and finish times:	8.30am-3.15pm (Reception) 8.30am-3.30pm (Years 1 to 5)
Accessibility:	Lift access
DfE Code:	206/2001
City of London Primary Academy Islington admissions criteria	
Last pupil admitted under distance criterion in Sept 2023:	0.57 miles
Calculate your home to school distance	
For more information Website: www.colpai.org.uk Contact name for admission enquiries: Denitsa Petkova Email: office@islingtonprimary.colpa.org.uk Tel: 020 7504 0556 Twitter: @colpaislington	
Does the school have two-year-old provision?	No
Does the school have a nursery class?	No
Does the school have a breakfast club?	No
Does the school have any after-school childcare?	Yes (3.15pm-6.00pm)
Does the school have a uniform?	Yes
Visiting dates:	Every Tuesday, 10.00am September to December 2023

Drayton Park Primary School

Fact file

Executive Head Teacher: Damien Parrott

Head of School: Annabelle Kapoor

Address: Arvon Road, N5 1PJ

[Drayton Park Primary School map](#)

Bus routes: 43, 271, 263, 393, 153

Nearest stations: Drayton Park (Overground)
Holloway Road / Arsenal / Highbury & Islington (Tube)



Type of School:	Mixed Community
Age range:	3 - 11
Total number of places available at the school (YR-Y6):	315
Number of places available in reception class:	45
School start and finish times:	8.55am - 3.30pm
Accessibility:	Fully accessible building
DfE Code:	206/2166
Drayton Park Primary admissions criteria	
Last pupil admitted under distance criterion in Sept 2023:	Does not apply
Calculate your home to school distance	
<p>For more information Website: www.draytonpark.islington.sch.uk Contact name for admission enquiries: Margaret Hervie Email: admin@draytonpark.islington.sch.uk Tel: 020 7607 4142 Twitter: @DraytonParkSch</p>	
Does the school have two-year-old provision?	No
Does the school have a nursery class?	Yes
Does the school have a breakfast club?	Yes
Does the school have any after-school childcare?	Yes
Does the school have a uniform?	Yes
Visiting dates:	We would love to show you around and tell you about our school. Contact the office and we can book you in.

Duncombe Primary School

Fact file

Head Teacher: Helen Ryan

Address: Sussex Way, N19 4JA

[Duncombe Primary School map](#)

Bus routes: 41, 43, 91, 210, 263, 271

Nearest stations: Archway, Finsbury Park (Tube) and Upper Holloway (Overground)



Type of School:	Mixed Community
Age range:	2 - 11
Total number of places available at the school (YR-Y6):	420
Number of places available in reception class:	60
School start and finish times:	8.45am - 3.25pm EYFS 8.40am - 3.20pm KS1/KS2
Accessibility:	Fully accessible on the ground floor; accessible toilets; yellow nosing for the visually impaired
DfE Code:	206/2170
Duncombe Primary School admissions criteria	
Last pupil admitted under distance criterion in Sept 2023:	Does not apply
Calculate your home to school distance	
For more information	
Website: www.duncombeprimary.co.uk	
Contact name for admission enquiries: Ailsa Hickman	
Email: success@duncombeprimary.co.uk	
Tel: 020 7272 5620	
Twitter: @DuncombePrimary	
Does the school have two-year-old provision?	Yes
Does the school have a nursery class?	Yes
Does the school have a breakfast club?	Yes
Does the school have any after-school childcare?	Yes
Does the school have a uniform?	Yes
Visiting dates:	Please contact the school office to arrange a tour/visit

Gillespie Primary School

Fact file

Head Teacher: Mark Owen

Address: Gillespie Road, N5 1LH

[Gillespie Primary School map](#)

Bus routes: 4, 19, 106, and 236

Nearest station: Arsenal



Type of School:	Mixed Community
Age range:	3 - 11
Total number of places available at the school (YR-Y6):	210
Number of places available in reception class:	30
School start and finish times:	8.55am - 3.30pm
Accessibility:	Wheelchair access to the ground floor only
DfE Code:	206/2251
Gillespie Primary School admissions criteria	
Last pupil admitted under distance criterion in Sept 2023:	0.148 miles
Calculate your home to school distance	
For more information Website: www.gillespie.islington.sch.uk Contact name for enquiries: Rebecca Williams Email: office@gillespie.islington.sch.uk Tel: 020 7226 6840 Twitter: @GillespieSchool	
Does the school have two-year-old provision?	No
Does the school have a nursery class?	Yes
Does the school have a breakfast club?	Yes
Does the school have any after-school childcare?	Yes
Does the school have a uniform?	Yes
Visiting dates:	Contact school office for dates

Grafton Primary School

Fact file

Head Teacher: Andrew Turnock

Address: Eburne Road, N7 6AR

[Grafton Primary School map](#)

Bus routes: 4, 29, 91, 253, 254, 259, 43, 271

Nearest stations: Holloway Road and Finsbury Park



Type of School:	Mixed Community
Age range:	2 - 11
Total number of places available at the school (YR-Y6):	420
Number of places available in reception class:	60
School start and finish times:	9.00am – 3.30pm
Accessibility:	Fully accessible building
DfE Code:	206/2261
Grafton Primary School admissions criteria	
Last pupil admitted under distance criterion in Sept 2023:	0.457 miles
Calculate your home to school distance	
For more information Website: www.graftonschool.co.uk Contact name for admission enquiries: Jeni Whelan Email: Jeni.whelan@grafton.islington.sch.uk Tel: 020 7272 3284	
Does the school have two-year-old provision?	Yes
Does the school have a nursery class?	Yes
Does the school have a breakfast club?	Yes
Does the school have any after-school childcare?	Yes
Does the school have a uniform?	No
Visiting dates:	9.45am every Wednesday. Please contact the school office to book a place

Hanover Primary School

Fact file

Head Teacher: Polly Shields

Address: Noel Road, N1 8BD

[Hanover Primary School map](#)

Bus routes: 4, 19, 30, 38, 43, 56, 73, 341, 476

Nearest station: Angel



Type of School:	Mixed Community
Age range:	3 - 11
Total number of places available at the school (YR-Y6):	315
Number of places available in reception class:	45
School start and finish times:	8.50am - 3.30pm
Accessibility:	Wheelchair access and lifts
DfE Code:	206/2279
Hanover Primary School admissions criteria	
Last pupil admitted under distance criterion in Sept 2023:	0.370 miles
Calculate your home to school distance	
<p>For more information Website: www.hanover.islington.sch.uk Contact name for admission enquiries: Marcia Norbal Email: admin@hanover.islington.sch.uk Tel: 020 7689 8949 Twitter: @hanoverschool</p>	
Does the school have two-year-old provision?	No
Does the school have a nursery class?	Yes
Does the school have a breakfast club?	Yes
Does the school have any after-school childcare?	Yes
Does the school have a uniform?	No
Visiting dates:	Please check school website for an updated list of open mornings

Hargrave Park School

Fact file

Head Teacher: Lisa Horton

Address: 51 Bredgar Road, N19 5BS

[Hargrave Park School map](#)

Bus routes: 4, 17, 41, 43, 134, 143, 210, 263, 271, 390, C11, W5

Nearest station: Archway



Type of School:	Mixed Community
Age range:	6 months - 11 years
Total number of places available at the school (YR-Y6):	315
Number of places available in reception class:	45
School start and finish times:	8.40am (soft start) 9am (registration) - 3.30pm
Accessibility:	Wheelchair access, accessible toilets
DfE Code:	206/2282
Hargrave Park School admissions criteria	
Last pupil admitted under distance criterion in Sept 2023:	Does not apply
Calculate your home to school distance	
For more information	
Website: www.hargravepark.com	
Contact name for admission enquiries: Mr Lacka Rathore	
Email: Parents@hargravepark.islington.sch.uk	
Tel: 020 7272 3989	
Twitter: @hargravepark	
Does the school have two-year-old provision?	Yes
Does the school have a nursery class?	Yes
Does the school have a breakfast club?	Yes
Does the school have any after-school childcare?	Yes
Does the school have a uniform?	Yes
Visiting dates:	Please contact the school to arrange a tour/visit

Highbury Quadrant Primary School

Fact file

Head Teacher: Terri Higgins

Address: Highbury New Park, N5 2DP

[Highbury Quadrant Primary School map](#)

Bus routes: 393, 141, 341, 19, 4, 236

Nearest stations: Canonbury, Highbury and Islington



Type of School:	Mixed Community
Age range:	2 - 11
Total number of places available at the school (YR-Y6):	390
Number of places available in reception class:	30
School start and finish times:	8.45am - 3.30pm
Accessibility:	Wheelchair access to the main building, accessible toilets, ramps
DfE Code:	206/2805
Highbury Quadrant Primary School admissions criteria	
Last pupil admitted under distance criterion in Sept 2023:	Does not apply
Calculate your home to school distance	
For more information	
Website: www.highburyquadrantprimary.co.uk	
Contact name for admission enquiries: Jennie Haughton	
Email: office@highburyquadrant.islington.sch.uk	
Tel: 020 7226 6531	
Does the school have two-year-old provision?	Yes
Does the school have a nursery class?	Yes
Does the school have a breakfast club?	Yes
Does the school have any after-school childcare?	Yes
Does the school have a uniform?	Yes
Visiting dates:	Every Thursday. Please contact the school for a tour/visit.

Hugh Myddelton Primary School

Fact file

Executive Head Teacher: Nathalie Parker

Head Teacher: Sarah Gill

Address: Myddelton Street, EC1R 1YJ

[Hugh Myddelton Primary School map](#)

Bus routes: 4, 19, 38, 153, 341



Type of School:	Mixed Community
Age range:	2 - 11
Total number of places available at the school (YR-Y6):	420
Number of places available in reception class:	60
School start and finish times:	8.55am - 3.30pm
Accessibility:	Wheelchair access, lift, accessible toilets
DfE Code:	206/2855
Hugh Myddelton Primary School admissions criteria	
Last pupil admitted under distance criterion in Sept 2023:	0.466 miles
Calculate your home to school distance	
For more information	
Website: www.lgps.co.uk/hughmyddelton	
Contact name for admission enquiries: Louise O'Dwyer	
Email: lodwyer@lgps.co.uk	
Tel: 020 7278 6075	
Does the school have two-year-old provision?	Yes
Does the school have a nursery class?	Yes
Does the school have a breakfast club?	Yes
Does the school have any after-school childcare?	Yes
Does the school have a uniform?	Yes
Visiting dates:	Please phone the office on: 020 7278 6075 to book a school tour

Hungerford Primary School

Fact file

Chief Executive: Dr. Penny Barratt

Head of School: Jo Stephens

Address: 249 Hungerford Road, N7 9LF

[Hungerford Primary School map](#)

Bus routes: 29, 253, 390, 393, 17, 91, 259, 274

Nearest station: Caledonian Road



Type of School:	Mixed Academy
Age range:	3 - 11
Total number of places available at the school (YR-Y6):	420
Number of places available in reception class:	60
School start and finish times:	9.00am - 3.30pm
Accessibility:	Wheelchair accessible
DfE Code:	206/2003
Hungerford Primary School admissions criteria	
Last pupil admitted under distance criterion in Sept 2023:	Does not apply
Calculate your home to school distance	
For more information	
Website: www.Thebridgelondon.co.uk/#hungerford	
Contact name for admission enquiries: Jo Stephens	
Email: hungerfordadmin@thebridgetrust.academy	
Tel: 020 7619 1000 (Option 2)	
Twitter: @hungerfordN7	
Does the school have two-year-old provision?	No
Does the school have a nursery class?	Yes
Does the school have a breakfast club?	Yes
Does the school have any after-school childcare?	Yes – Walking bus to another site where after-school care is provided
Does the school have a uniform?	Yes
Visiting dates:	We are flexible with days and times

Laycock Primary School

Fact file

Head Teacher: Amy Lazarczyk

Address: Laycock Street, N1 1SW

[Laycock Primary School map](#)

Bus routes: 4, 19, 30, 43, 271

Nearest station: Highbury and Islington



Type of School:	Mixed Community
Age range:	3 - 11
Total number of places available at the school (YR-Y6):	350
Number of places available in reception class:	50
School start and finish times:	8.50am - 3.30pm
Accessibility:	Wheelchair access, lift. Accessible toilets, adaptations for hearing impairment
DfE Code:	206/2379
Laycock Primary School admissions criteria	Applications for the Deaf Provision can only be made via Islington's SEN team
Last pupil admitted under distance criterion in Sept 2023:	Does not apply
Calculate your home to school distance	
<p>For more information Website: www.laycock.islington.sch.uk Contact name for admission enquiries: Lynsey Houlton Email: office@laycock.islington.sch.uk Tel: 020 7226 2927 Twitter: @LaycockPrimary</p>	
Does the school have two-year-old provision?	No
Does the school have a nursery class?	Yes
Does the school have a breakfast club?	Yes (contact the school for details)
Does the school have any after-school childcare?	Yes
Does the school have a uniform?	Yes
Visiting dates:	Please book a tour via the school website: 9.30am: 2, 9, 16 Oct; 6, 27 Nov; 11 Dec 5.00pm: 15 Nov

Montem Primary School

Fact file

Executive Head Teacher: Damien Parrott

Head of School: Tom O'Donnell

Address: Hornsey Road, N7 7QT

[Montem Primary School map](#)

Bus routes: 4, 29, 91, 153, 253, 254, 259

Nearest station: Finsbury Park



Type of School:	Mixed Community
Age range:	2 - 11
Total number of places available at the school (YR-Y6):	405
Number of places available in reception class:	45
School start and finish times:	8.55am - 3.30pm
Accessibility:	Wheelchair access, lift, accessible toilets
DfE Code:	206/2852
Montem Primary School admissions criteria	
Last pupil admitted under distance criterion in Sept 2023:	Does not apply
Calculate your home to school distance	
<p>For more information Website: www.montem.islington.sch.uk Contact name for admission enquiries: Chrissy Atkinson Email: admin@montem.islington.sch.uk Tel: 020 7272 6556 Twitter: @MontemSchool</p>	
Does the school have two-year-old provision?	Yes
Does the school have a nursery class?	Yes
Does the school have a breakfast club?	Yes
Does the school have any after-school childcare?	Yes
Does the school have a uniform?	Yes
Visiting dates:	We run tours every Thursday, at 10:15am, from September through to January. Call us to book a slot. We'd love to show you round our school.

Moreland Primary School and Children's Centre

Fact file

Head Teacher: Catherine Lawrence

Address: Moreland Street, EC1V 8BB

Moreland Primary School and Children's Centre

[map](#)

Bus routes: 4, 43, 205, 394, 56

Nearest stations: Angel and Old Street



Type of School:	Mixed Community
Age range:	0 - 11
Total number of places available at the school (YR-Y6):	420
Number of places available in reception class:	60
School start and finish times:	9.00am - 3.30pm
Accessibility:	Fully accessible building including lift and accessible toilets
DfE Code:	206/2429
Moreland Primary School and Children's Centre admissions criteria	
Last pupil admitted under distance criterion in Sept 2023:	Does not apply
Calculate your home to school distance	
<p>For more information Website: www.moreland-islington.co.uk Contact name for admission enquiries: Sandra Owens and Catherine Bradley Email: admin@moreland.islington.sch.uk Tel: 020 7253 8144 Twitter: @morelandprimary</p>	
Does the school have two-year-old provision?	Yes
Does the school have a nursery class?	Yes
Does the school have a breakfast club?	Yes
Does the school have any after-school childcare?	Yes
Does the school have a uniform?	Yes
Visiting dates:	9.30am Tuesdays and Fridays (alternate weeks)

Newington Green Primary School

Fact file

Executive Head: Abi Misselbrook-Lovejoy

Head of School: Mairead McDonnell

Address: Matthias Road, N16 8NP

[Newington Green Primary School map](#)

Bus routes: 73, 141, 236, 476

Nearest stations: Canonbury or Dalston Kingsland



Type of School:	Mixed Community
Age range:	2 - 11
Total number of places available at the school (YR-Y6):	420
Number of places available in reception class:	60
School start and finish times:	8.55am - 3.30pm
Accessibility:	Ground floor accessible only
DfE Code:	206/2853
Newington Green Primary School admissions criteria	
Last pupil admitted under distance criterion in Sept 2023:	Does not apply
Calculate your home to school distance	
<p>For more information Website: www.newingtongreen.co.uk Contact name for admission enquiries: Alejandra Bermejo Escudero Email: admin@newingtongreen.co.uk Tel: 020 7254 3092 Twitter: NewingtonGreenN16@NGPrimary Instagram: NewingtonGreenPrimary</p>	
Does the school have two-year-old provision?	Yes
Does the school have a nursery class?	Yes
Does the school have a breakfast club?	Yes (from 7.30am)
Does the school have any after-school childcare?	Yes (until 6.30pm)
Does the school have a uniform?	Yes
Visiting dates:	Please call or email the school office to arrange a time to visit that suits you

Pakeman Primary School

Fact file

Head Teacher: Emma Bonnin

Address: Hornsey Road, N7 6DU

[Pakeman Primary School map](#)

Bus routes: 4, 29, 91, 153, 253, 254, 259

Nearest stations: Holloway Road, Finsbury Park, Arsenal



Type of School:	Mixed Community
Age range:	2 - 11
Total number of places available at the school (YR-Y6):	315
Number of places available in reception class:	45
School start and finish times:	8.45am (soft start) 9.00am (registration) - 3.30pm
Accessibility:	Wheelchair accessibility to the ground floor, accessible toilets
DfE Code:	206/2455
Pakeman Primary School admissions criteria	
Last pupil admitted under distance criterion in Sept 2023:	Does not apply
Calculate your home to school distance	
For more information Website: www.pakemanprimary.co.uk Contact name for admission enquiries: Ann Dwyer Email: admin@pakeman.islington.sch.uk Tel: 020 7607 2575 Twitter: @PakemanSchool	
Does the school have two-year-old provision?	Yes
Does the school have a nursery class?	Yes
Does the school have a breakfast club?	Yes
Does the school have any after-school childcare?	Yes
Does the school have a uniform?	Yes
Visiting dates:	Please contact the school to arrange a tour/visit

Pooles Park Primary School

Fact file

Head Teacher: Craig Taylor

Address: Lennox Road, N4 3NW

[Pooles Park Primary School map](#)

Bus routes: 4, 19, 210

Nearest station: Finsbury Park



Type of School:	Mixed Community
Age range:	3 - 11
Total number of places available at the school (YR-Y6):	375
Number of places available in reception class:	30
School start and finish times:	8.45am (soft start) 9.00am (registration) - 3.30pm (early years 3.20pm)
Accessibility:	Fully accessible building (only on the ground floor)
DfE Code:	206/2856
Pooles Park Primary School admissions criteria	
Last pupil admitted under distance criterion in Sept 2023:	Does not apply
Calculate your home to school distance	
For more information Website: www.poolespark.com Contact name for admission enquiries: Naz Naciye Ahmet Email: admin@poolespark.islington.sch.uk Tel: 020 7272 2655	
Does the school have two-year-old provision?	No
Does the school have a nursery class?	Yes
Does the school have a breakfast club?	Yes, from 8am
Does the school have any after-school childcare?	Yes – after school clubs until 4.30pm
Does the school have a uniform?	Yes
Visiting dates:	Please contact the school office to arrange a visit/tour.

Prior Weston Primary School and Children's Centre

Fact file

Head Teacher: Fiona MacCorquodale

Address: 101 Whitecross Street, EC1Y 8JA

[Prior Weston Primary School and Children's Centre map](#)

Bus routes: 4, 21, 53, 56, 76, 153, 214,

Nearest station: Moorgate, Barbican or Liverpool Street



Type of School:	Mixed Community
Age range:	0 - 11
Total number of places available at the school (YR-Y6):	420
Number of places available in reception class:	60
School start and finish times:	8.45am (soft start) 9.00am (registration) – 3.30pm
Accessibility:	Fully accessible building including lift and accessible toilets with hoist
DfE Code:	206/2850
<u>Prior Weston Primary School and Children's Centre admissions criteria</u>	
Last pupil admitted under distance criterion in Sept 2023:	Does not apply
<u>Calculate your home to school distance</u>	
For more information	
Website: www.priorweston.islington.sch.uk	
Contact name for admission enquiries: Adam Cornwall	
Email: office@priorweston.islington.sch.uk	
Tel: 020 7786 4800	
Twitter: @Prior_Weston	
Does the school have two-year-old provision?	Yes
Does the school have a nursery class?	Yes
Does the school have a breakfast club?	Yes
Does the school have any after-school childcare?	Yes
Does the school have a uniform?	No
Visiting dates:	Please contact the school to arrange a tour or visit

Robert Blair School

Fact file

Head Teacher: Michelle Bahn

Address: Brewery Road, N7 9QJ

Robert Blair School map

Bus routes: 17, 91, 153, 259, 274, 390, 393

Nearest stations: Caledonian Road (Tube) or Caledonian Road and Barnsbury (Overground)



Type of School:	Mixed Community
Age range:	0 - 11
Total number of places available at the school (YR-Y6):	210
Number of places available in reception class:	30
School start and finish times:	8.45am (soft start) 9.00am registration – 3.30pm
Accessibility:	Wheelchair accessibility to the ground floor and accessible toilet
DfE Code:	206/2515
Robert Blair School admissions criteria	
Last pupil admitted under distance criterion in Sept 2023:	Does not apply
Calculate your home to school distance	
For more information Website: www.robertblairschool.com Contact name for admission enquiries: Diana Williamson Email: admin@robertblair.islington.sch.uk Tel: 020 7607 4115 Twitter: @RobertBlairSch	
Does the school have two-year-old provision?	Yes
Does the school have a nursery class?	Yes
Does the school have a breakfast club?	Yes
Does the school have any after-school childcare?	Yes
Does the school have a uniform?	Yes
Visiting dates:	9.30am second Tuesday of every month (term time only). Please book via the school office on 020 7607 4115

Rotherfield Primary School

Fact file

Executive Head Teacher: Abi Misselbrook-Lovejoy

Head of School: Nia Silverwood

Address: Rotherfield Street, N1 3EE

[Rotherfield Primary School map](#)

Bus routes: 21, 38, 73, 76, 141, 271

Nearest stations: Essex Road overground,
Highbury and Islington underground



Type of School:	Mixed Community
Age range:	3 - 11
Total number of places available at the school (YR-Y6):	420
Number of places available in reception class:	60
School start and finish times:	8.55am to 3.30pm
Accessibility:	Wheelchair access to the ground floor only
DfE Code:	206/2857
Rotherfield Primary School admissions criteria	
Last pupil admitted under distance criterion in Sept 2023:	Does not apply
Calculate your home to school distance	
<p>For more information Website: www.rotherfieldprimaryschool.co.uk Contact name for admission enquiries: Alejandra Bermejo Escudero Email: admin@rotherfieldprimary.co.uk Tel: 020 7226 6620 Twitter: RotherfieldPrimaryN1 @N1Primary Instagram: Rotherfield_Primary</p>	
Does the school have two-year-old provision?	No
Does the school have a nursery class?	Yes
Does the school have a breakfast club?	Yes (from 7.45am)
Does the school have any after-school childcare?	Yes (until 6.30pm)
Does the school have a uniform?	Yes
Visiting dates:	Please call or email the school office to arrange a time that suits you

Sacred Heart Catholic Primary School

Fact file

Head Teacher: John Lane

Address: 68 Georges Road, N7 8JN

Sacred Heart Catholic Primary School map

Bus routes: 43, 153, 271, 17, 91

Nearest stations: Holloway Road, Highbury and Islington, Caledonian Road



Type of School:	Mixed Voluntary-aided Catholic
Age range:	3 - 11
Total number of places available at the school (YR-Y6):	420
Number of places available in reception class:	60
School start and finish times:	8.45am - 3.30pm
Accessibility:	Ramp access and accessible toilets
DfE Code:	206/3384
Sacred Heart Catholic Primary School admissions criteria	
Sacred Heart Catholic Primary School Supplementary Information Form (SIF)	
Distance of last pupil admitted under the final criterion (distance) in Sept 2023:	Does not apply
Calculate your home to school distance	
For more information Website: www.sacredheart.islington.sch.uk Contact name for admission enquiries: Mrs Sharon Harney Email: admin@sacredheart.islington.sch.uk Tel: 020 7607 3407 Twitter: @SacredHeart_CS	
Does the school have two-year-old provision?	No
Does the school have a nursery class?	Yes
Does the school have a breakfast club?	Yes
Does the school have any after-school childcare?	Yes (after-school club)
Does the school have a uniform?	Yes
Visiting dates:	Please call the school office to arrange a visit

St Andrew's (Barnsbury) CE Primary School

Fact file

Head Teacher: Felicity Djerehe

Address: Matilda Street, N1 0LB

[St Andrew's \(Barnsbury\) CE Primary School map](#)

Bus routes: 17, 91, 153, 259, 274

Nearest stations: Caledonian Road and Barnsbury (Overground)



Type of School:	Mixed Voluntary-aided Church of England
Age range:	4 - 11 years
Total number of places available at the school (YR-Y6):	210
Number of places available in reception class:	30
School start and finish times:	8.55am – 3.25pm (Reception) 8.55am – 3.30pm (All other year groups)
Accessibility:	Wheelchair access, accessible toilets
DfE Code:	206/3606
St Andrew's (Barnsbury) CE Primary School admissions criteria	
St Andrew's (Barnsbury) CE Primary Supplementary Information Form (SIF)	
Distance of last pupil admitted under the final criterion (distance) in Sept 2023:	Does not apply
Calculate your home to school distance	
For more information Website: www.standrews.islington.sch.uk Contact name for admission enquiries: Keeley Doolan Email: admin@standrews.islington.sch.uk Tel: 020 7837 4049	
Does the school have two-year-old provision?	No
Does the school have a nursery class?	No
Does the school have a breakfast club?	Yes
Does the school have any after-school childcare?	Yes
Does the school have a uniform?	Yes
Visiting dates:	17 Oct at 11.00am and 31 Oct at 2.00pm (or by appointment at any other time)

St Joan of Arc Catholic Primary School

Fact file

Head Teacher: Clare Campbell

Address: Northholme Road, N5 2UX

[St Joan of Arc Catholic Primary School map](#)

Bus routes: 4, 19, 236

Nearest stations: Arsenal or Highbury and Islington



Type of School:	Mixed Voluntary-aided Catholic
Age range:	3 - 11
Total number of places available at the school (YR-Y6):	420
Number of places available in reception class:	60
School start and finish times:	8.30am - 3.00pm
Accessibility:	Ramp access, accessible toilets
DfE Code:	206/3631
St Joan of Arc Catholic Primary School admissions criteria	
St Joan of Arc Catholic Primary School Supplementary Information Form (SIF)	
Distance of last pupil admitted under the final criterion (distance) in Sept 2023:	0.33 miles
Calculate your home to school distance	
For more information Website: www.st-joanofarc.islington.sch.uk Contact name for admission enquiries: Barbara van Kan Email: admissions@st-joanofarc.islington.sch.uk Tel: 020 7226 3920	
Does the school have two-year-old provision?	No
Does the school have a nursery class?	Yes
Does the school have a breakfast club?	No
Does the school have any after-school childcare?	Yes
Does the school have a uniform?	Yes
Visiting dates:	See school website for dates and times

St John Evangelist Primary School

Fact file

Head Teacher: Ms Stephanie Maker

Address: Duncan Street, N1 8BL

St John Evangelist Primary School map

Bus routes: 4, 19, 30, 38, 43, 56, 73, 153, 205, 214, 274, 341, 394, 476

Nearest station: Angel



Type of School:	Mixed Voluntary-aided Catholic
Age range:	3 - 11
Total number of places available at the school (YR-Y6):	280
Number of places available in reception class:	40
School start and finish times:	8.45am (soft start) 9.00am (registration) - 3.15pm
Accessibility:	Accessible toilets
DfE Code:	206/3456
St John Evangelist Primary School admissions criteria	
St John Evangelist Primary School Supplementary Information Form (SIF)	
Distance of last pupil admitted under the final criterion (distance) in Sept 2023:	Does not apply
Calculate your home to school distance	
For more information Website: www.stjohnevangelist.co.uk Contact name for admission enquiries: Tina Roseman Email: office@stjohnevangelist.islington.sch.uk Tel: 020 7226 1314 Twitter: @stjeN1	
Does the school have two-year-old provision?	No
Does the school have a nursery class?	Yes
Does the school have a breakfast club?	Yes
Does the school have any after-school childcare?	Yes
Does the school have a uniform?	Yes
Visiting dates:	Please call the school for details

St John's Highbury Vale Primary School

Fact file

Executive Head Teacher: Tonnie Reid

Head of School: Hasina Khan

Address: Conewood Street, N5 1DL

[St John's Highbury Vale Primary School map](#)

Bus routes: 4, 19, 236

Nearest station: Arsenal



Type of School:	Mixed Voluntary-aided Church of England
Age range:	4 - 11
Total number of places available at the school (YR-Y6):	210
Number of places available in reception class:	30
School start and finish times:	8.55am - 3.30pm
Accessibility:	Ramp access, accessible toilets
DfE Code:	206/3471
St John's Highbury Vale Primary School admissions criteria	
St John's Highbury Vale Supplementary Information Form (SIF)	
Distance of last pupil admitted under the final criterion (distance) in Sept 2023:	0.21 miles
Calculate your home to school distance	
For more information Website: www.stjhv.islington.sch.uk Contact name for admission enquiries: The school office Email: admin@stjhv.islington.sch.uk Tel: 020 7226 4906 Twitter: @STJHV	
Does the school have two-year-old provision?	No
Does the school have a nursery class?	No
Does the school have a breakfast club?	Yes (Monday – Friday)
Does the school have any after-school childcare?	Yes (3.30 – 6.00pm)
Does the school have a uniform?	Yes
Visiting dates:	Please contact the school to arrange a tour or visit

St John's Upper Holloway CE Primary School

Fact file

Head Teacher: Nick Turpin

Address: Pemberton Gardens, N19 5RR

**[St John's Upper Holloway CE Primary School](#)
[map](#)**

Bus routes: 17, 43, 134, 263, 271, 390

Nearest stations: Upper Holloway overground and Archway underground



Type of School:	Mixed Voluntary-aided Church of England
Age range:	2 - 11
Total number of places available at the school (YR-Y6):	210
Number of places available in reception class:	30
School start and finish times:	9.00am - 3.30pm
Accessibility:	Fully accessible building
DfE Code:	206/3465
St John's Upper Holloway CE Primary School admissions criteria	
St John's Upper Holloway CE Primary School Supplementary Information Form (SIF)	
Distance of last pupil admitted under the final criterion (distance) in Sept 2023:	0.99 miles
Calculate your home to school distance	
For more information Website: www.stjohnsupperholloway.co.uk Contact name for admission enquiries: School Office Email: info@st-johnsholloway.islington.sch.uk Tel: 020 7272 2780	
Does the school have two-year-old provision?	Yes
Does the school have a nursery class?	Yes
Does the school have a breakfast club?	Yes
Does the school have any after-school childcare?	Yes
Does the school have a uniform?	Yes
Visiting dates:	Please contact the school to arrange a tour or visit

St Joseph's Catholic Primary School and Nursery

Fact file

Executive Head Teacher: Clare McFlynn

Head of School: Angela Noronha

Address: Highgate Hill, N19 5NE

[St Joseph's Catholic Primary School and Nursery map](#)

Bus routes: 43, 134, 210, 271, W5

Nearest station: Archway



Type of School:	Mixed Voluntary-aided Catholic
Age range:	2 - 11
Total number of places available at the school (YR-Y6):	420
Number of places available in reception class:	60
School start and finish times:	8.55am (soft start from 8.40am) - 3.15pm
Accessibility:	Wheelchair access to ground floor and accessible toilets, lift access
DfE Code:	206/3483
St Joseph's Catholic Primary School and Nursery admissions criteria	
St Joseph's Catholic Primary School and Nursery Supplementary Information Form (SIF)	
Last pupil admitted under distance criterion in Sept 2023:	Does not apply
Calculate your home to school distance	
For more information Website: www.st-josephs.islington.sch.uk Contact name for admission enquiries: Louise Palmer Email: office@st-josephs.islington.sch.uk Tel: 020 7272 1270 Twitter: @stjhighgate	
Does the school have two-year-old provision?	Yes
Does the school have a nursery class?	Yes
Does the school have a breakfast club?	Yes (from 7.30am)
Does the school have any after-school childcare?	Yes (until 6.00pm)
Does the school have a uniform?	Yes
Visiting dates:	Contact the school to arrange a tour

St Jude and St Paul's CE Primary School

Fact file

Head Teacher: Ms Adeola Oladejo

Address: 10 Kingsbury Road, N1 4AZ

St Jude and St Paul's CE Primary School map

Bus routes: 30, 38, 56, 236, 277

Nearest station: Dalston Kingsland



Type of School:	Mixed Voluntary-aided Church of England
Age range:	4 - 11
Total number of places available at the school (YR-Y6):	210
Number of places available in reception class:	30
School start and finish times:	9.00am - 3.30pm
Accessibility:	Fully accessible
DfE Code:	206/3488
St Jude and St Paul's CE Primary School admissions criteria	
St Jude and St Paul's CE Primary School Supplementary Information Form (SIF)	
Distance of last pupil admitted under the final criterion (distance) in Sept 2023:	Does not apply
Calculate your home to school distance	
For more information Website: www.stjudestpauls.co.uk Contact name for admission enquiries: Carol Parker Email: admin@sjsp.islington.sch.uk Tel: 020 7254 5598 Twitter: @sjpschool	
Does the school have two-year-old provision?	No
Does the school have a nursery class?	Yes
Does the school have a breakfast club?	Yes (from 7.30am)
Does the school have any after-school childcare?	Yes (until 6.00pm)
Does the school have a uniform?	Yes
Visiting dates:	Please contact the school office to arrange a tour or visit

St Luke's CE Primary School

Fact file

Head Teacher: Ann Dwulit

Address: Radnor Street, EC1V 3SJ

St Luke's CE Primary School map

Bus routes: 21, 43, 55, 76, 135, 141, 205, 214, 243, 271, 394

Nearest station: Old Street



Type of School:	Mixed Voluntary-aided Church of England
Age range:	3 - 11
Total number of places available at the school (YR-Y6):	210
Number of places available in reception class:	30
School start and finish times:	9.10am - 3.30pm
Accessibility:	Wheelchair access
DfE Code:	206/3495
St Luke's CE Primary School admissions criteria	
St Luke's CE Primary School Supplementary Information Form (SIF)	
Distance of last pupil admitted under the final criterion (distance) in Sept 2023:	Does not apply
Calculate your home to school distance	
<p>For more information Website: www.st-lukesislington.co.uk Contact name for admission enquiries: Angela Major Email: admin@st-lukes.islington.sch.uk Tel: 020 7253 3880 Twitter: @stlukesoldst</p>	
Does the school have two-year-old provision?	No
Does the school have a nursery class?	Yes
Does the school have a breakfast club?	Yes
Does the school have any after-school childcare?	Yes
Does the school have a uniform?	Yes
Visiting dates:	Please call the school to book an appointment

St Mark's CE Early Years and Primary School

Fact file

Head Teacher: Martha Braithwaite

Address: Sussex Way, N19 4JF

[St Mark's CE Early Years and Primary School map](#)

Bus routes: 17, 43, 91, 271

Nearest stations: Finsbury Park (Tube) Archway or Upper Holloway



Type of School:	Mixed Voluntary-aided Church of England
Age range:	2 - 11
Total number of places available at the school (YR-Y6):	210
Number of places available in reception class:	30
School start and finish times:	8.55am - 3.30pm
Accessibility:	Second floor of main school building not accessible for wheelchair users
DfE Code:	206/3501
St Mark's CE Early Years and Primary School admissions criteria	
St Mark's CE Early Years and Primary School Supplementary Information Form (SIF)	
Distance of last pupil admitted under the final criterion (distance) in Sept 2023:	0.33 miles
Calculate your home to school distance	
For more information Website: www.st-marks.islington.sch.uk Contact name for admission enquiries: Karen Kean Email: admin@st-marks.islington.sch.uk Tel: 020 7272 5967	
Does the school have two-year-old provision?	Yes
Does the school have a nursery class?	Yes
Does the school have a breakfast club?	Yes
Does the school have any after-school childcare?	Yes (age 5 and above)
Does the school have a uniform?	Yes
Visiting dates:	9.30am: Tues Oct 3, Nov 7, Dec 5, 2023 Thurs Jan 11, 2024

St Mary Magdalene Academy

Fact file

Academy Head Teacher: Vicky Linsley

Head of Primary: Kate Dingle

Address: Liverpool Road, N7 8PG

[St Mary Magdalene Academy map](#)

Bus routes: 17, 19, 30, 43, 91, 153, 259, 271, 274, 277

Nearest stations: Caledonian Road or Highbury and Islington



Type of School:	Mixed Church of England Academy
Age range:	4 - 19
Total number of places available at the school (YR-Y6):	210
Number of places available in reception class:	30
School start and finish times:	8.45am - 3.20pm
Accessibility:	Fully accessible building
DfE Code:	206/6905
St Mary Magdalene Academy admissions criteria	
St Mary Magdalene Academy Supplementary Information Form (SIF)	
Distance of last pupil admitted under the final criterion (distance) in Sept 2023:	0.184 miles
Calculate your home to school distance	
For more information Website: www.smmacademy.org Contact name for admission enquiries: Birte Rohloff Email: admissionsregistrar@smmacademy.org Tel: 020 7697 0123 Twitter: @StMM_Academy	
Does the school have two-year-old provision?	No
Does the school have a nursery class?	No
Does the school have a breakfast club?	Yes
Does the school have any after-school childcare?	Yes (after-school clubs for Years 1-6)
Does the school have a uniform?	Yes
Visiting dates:	Tuesdays 10.00am: 3, 10, 31 Oct; 7, 14, 21, 28 Nov; 5, 12 Dec 2023

St Mary's Islington CE Primary School

Fact file

Executive Head Teacher: Anthony David

Head Teacher: Genevieve Prayag

Address: Fowler Road, N1 2EP

[St Mary's Islington CE Primary School map](#)

Bus routes: 4, 19, 30, 38, 43, 56, 73

Nearest stations: Essex Road, Highbury and Islington or Angel (Overground)



Type of School:	Mixed Voluntary-aided Church of England
Age range:	4 - 11
Total number of places available at the school (YR-Y6):	210
Number of places available in reception class:	30
School start and finish times:	8.50am - 3.30pm
Accessibility:	Lift and accessible toilets
DfE Code:	206/3527
St Mary's Islington CE Primary School admissions criteria	
St Mary's Islington CE Primary School Supplementary Information Form (SIF)	
Distance of last pupil admitted under the final criterion (distance) in Sept 2023:	Does not apply
Calculate your home to school distance	
<p>For more information Website: www.stmarys.islington.sch.uk Contact name for admission enquiries: Kirsten Oliver Email: school@stmarys.islington.sch.uk Tel: 020 7359 1870 Twitter: @StMarysN1</p>	
Does the school have two-year-old provision?	No
Does the school have a nursery class?	No
Does the school have a breakfast club?	Yes (age 5 and above)
Does the school have any after-school childcare?	Yes (age 5 and above)
Does the school have a uniform?	Yes
Visiting dates:	Please contact the school for visiting dates

St Peter and St Paul Catholic Primary School

Fact file

Head Teacher: Tracey Peters

Address: Compton Street, EC1V 0EU

[St Peter and St Paul Catholic Primary School map](#)

Bus routes: 4, 56, 153

Nearest stations: Barbican, Angel, Old Street or Farringdon



Type of School:	Mixed Voluntary-aided Catholic
Age range:	3 - 11
Total number of places available at the school (YR-Y6):	210
Number of places available in reception class:	30
School start and finish times:	8.30-8.45am (soft start) - 3.00pm
Accessibility:	Accessible toilet on ground floor
DfE Code:	206/3575
<u>St Peter and St Paul Catholic Primary School admissions criteria</u>	
<u>St Peter and St Paul Catholic Primary School Supplementary Information Form (SIF)</u>	
Distance of last pupil admitted under the final criterion (distance) in Sept 2023:	Does not apply
<u>Calculate your home to school distance</u>	
For more information	
Website: www.stpetersandstpauls.islington.sch.uk	
Contact name for admission enquiries: Maria Bennett or Katie Hankins	
Email: admin@stpetersandstpauls.islington.sch.uk	
Tel: 020 7253 0839	
Twitter: @Ss_Peter_Pauls	
Does the school have two-year-old provision?	No
Does the school have a nursery class?	Yes
Does the school have a breakfast club?	Yes
Does the school have any after-school childcare?	Yes
Does the school have a uniform?	Yes
Visiting dates:	Every day at 9.30am or contact the school to arrange an alternative time

The New North Academy

Fact file

Executive Head Teacher: Ashley Eastwood

Head Teacher: Ffion Evans

Address: 32 Popham Road, N1 8SJ

[The New North Academy map](#)

Bus routes: 21, 38, 56, 73, 341, 476

Nearest stations: Highbury and Islington, Angel (Tube) or Essex Road (Overground)



Type of School:	Mixed Academy
Age range:	3 - 11
Total number of places available at the school (YR-Y6):	390
Number of places available in reception class:	30
School start and finish times:	8.45am - 3.30pm
Accessibility:	Disabled parking, wheelchair access, automatic doors, lift, accessible toilets, adaptations for hearing and visual impairment, refuge points, visual and audible fire alarm system
DfE Code:	206/3644
The New North Academy admissions criteria	
Last pupil admitted under distance criterion in Sept 2023:	Does not apply
Calculate your home to school distance	
For more information Website: www.newnorthacademy.com Contact name for admission enquiries: Lauren Jones Email: lauren.jones@lihtrust.uk Tel: 020 7704 3900 Twitter: @NewNorthAcademy	
Does the school have two-year-old provision?	No
Does the school have a nursery class?	Yes
Does the school have a breakfast club?	Yes (from 8.00am)
Does the school have any after-school childcare?	Yes (until 5.45pm)
Does the school have a uniform?	Yes
Visiting dates:	Please contact the school office to arrange a tour/visit

Thornhill Primary School

Fact file

Head Teacher: Jenny Lewis

Address: Thornhill Road, N1 1HX

[Thornhill Primary School map](#)

Bus routes: 4, 19, 30, 43, 153, 274, 812

Nearest stations: Caledonian Road and Barnsbury overground, Angel, Highbury and Islington



Type of School:	Mixed Community
Age range:	3 - 11
Total number of places available at the school (YR-Y6):	420
Number of places available in reception class:	60
School start and finish times:	8.55am - 3.15pm
Accessibility:	Wheelchair access, lift, accessible toilets
DfE Code:	206/2596
Thornhill Primary School admissions criteria	
Last pupil admitted under distance criterion in Sept 2023:	0.364 miles
Calculate your home to school distance	
For more information	
Website: www.thornhill.islington.sch.uk	
Contact name for admission enquiries: Burcu Melemez or Jodie Smith	
Email: admissions@thornhill.islington.sch.uk	
Tel: 020 7607 4162	
Twitter: @ThornhillLondon	
Does the school have two-year-old provision?	No
Does the school have a nursery class?	Yes
Does the school have a breakfast club?	Yes (from 8.00am)
Does the school have any after-school childcare?	Yes (until 6.00pm)
Does the school have a uniform?	Yes
Visiting dates:	Please email the school to arrange a tour/visit: Thornhill@thornhill.islington.sch.uk

Tufnell Park Primary School

Fact file

Head Teacher: Martin Scarborough

Address: Carleton Road, N7 0HJ

Tufnell Park Primary School map

Bus routes: 4, 29, 253, 390, 393

Nearest stations: Tufnell Park, Caledonian Road or Kentish Town (Overground)



Type of School:	Mixed Community
Age range:	2 - 11
Total number of places available at the school (YR-Y6):	540
Number of places available in reception class:	90
School start and finish times:	8.55am - 3.30pm
Accessibility:	Fully accessible
DfE Code:	206/2803
Tufnell Park Primary School admissions criteria	
Last pupil admitted under distance criterion in Sept 2023:	Does not apply
Calculate your home to school distance	
For more information Website: www.tufnellpark.islington.sch.uk Contact name for admission enquiries: Renata Flavell Email: admin@tufnellpark.islington.sch.uk Tel: 020 7607 4852 Twitter: @TufnellS	
Does the school have two-year-old provision?	Yes
Does the school have a nursery class?	Yes
Does the school have a breakfast club?	Yes
Does the school have any after-school childcare?	Yes (Hilldrop Play Project)
Does the school have a uniform?	Yes
Visiting dates:	Tours with the headteacher are available most Fridays throughout the Autumn term, between 11am and 12pm. Please contact the office to book a place.

Vittoria Primary School

Fact file

Interim Head Teacher: Matthew Akinnayajo

Address: Treaty Street, N1 0WF

[Vittoria Primary School map](#)

Bus routes: 17, 91, 153, 259, 274, 390

Nearest stations: King's Cross



Type of School:	Mixed Community
Age range:	3 - 11
Total number of places available at the school (YR-Y6):	315
Number of places available in reception class:	45
School start and finish times:	8.45am - 3.15pm
Accessibility:	Ground floor is fully accessible
DfE Code:	206/2624
Vittoria Primary School admissions criteria	
Last pupil admitted under distance criterion in Sept 2023:	Does not apply
Calculate your home to school distance	
For more information Website: www.vittoria.islington.sch.uk Contact name for admission enquiries: Britta Eke Email: office@vittoria.islington.sch.uk Tel: 020 7837 5597 Twitter: @VittoriaPrimary	
Does the school have two-year-old provision?	No
Does the school have a nursery class?	Yes
Does the school have a breakfast club?	Yes
Does the school have any after-school childcare?	Yes
Does the school have a uniform?	Yes
Visiting dates:	10.30am every Friday

Whitehall Park School

Fact file

Head Teacher: Alison Hatch

Address: 106 Hornsey Lane, N6 5EP

[Whitehall Park School map](#)

Bus routes: 41, 43, 91, 134, 210, 234, 263, W5

Nearest stations: Archway Station, Highgate Station or Crouch Hill Station (Overground)



Type of School:	Mixed Free School
Age range:	4 - 11
Total number of places available at the school (YR-Y6):	420
Number of places available in reception class:	60
School start and finish times:	8.55am - 3.30pm
Accessibility:	Fully accessible building
DfE Code:	206/2000
Whitehall Park School admissions criteria	
Last pupil admitted under distance criterion in Sept 2023:	Does not apply
Calculate your home to school distance	
For more information Website: www.whitehallparkschool.co.uk Contact name for admission enquiries: Ruqayyah Lamara Email: office@whitehallparkschool.org.uk Tel: 020 7561 0113 Twitter: @whitehallpksch	
Does the school have two-year-old provision?	No
Does the school have a nursery class?	No
Does the school have a breakfast club?	Yes (from 7.45am)
Does the school have any after-school childcare?	Yes
Does the school have a uniform?	Yes
Visiting dates:	For visiting dates, please check the Admissions page on our school website.

William Tyndale Primary School

Fact file

Head Teacher: Sophie Gavalda

Address: Upper Street, N1 2GG

[William Tyndale Primary School map](#)

Bus routes: 4, 19, 30, 43

Nearest station: Highbury and Islington



Type of School:	Mixed Academy
Age range:	3 - 11
Total number of places available at the school (YR-Y6):	420
Number of places available in reception class:	60
School start and finish times:	8.55am - 3.30pm
Accessibility:	Fully accessible (wheelchair access and accessible toilets on every floor, lift and ramps)
DfE Code:	206/2643
William Tyndale Primary School admissions criteria	
Last pupil admitted under distance criterion in Sept 2023:	0.198 miles
Calculate your home to school distance	
For more information	
Website: www.williamtyndale-islington.co.uk	
Contact name for admission enquiries: Penny El-Nemer	
Email: admin@williamtyndale.islington.sch.uk	
Tel: 020 7226 6803	
Twitter: @WilliamTyndalePrimary	
Does the school have two-year-old provision?	No
Does the school have a nursery class?	Yes
Does the school have a breakfast club?	Yes
Does the school have any after-school childcare?	Yes
Does the school have a uniform?	No
Visiting dates:	9.15am; 28 Sept 2023; 14 Nov 2023 11 Jan 2024; 11 June 2024

Winton Primary School

Fact file

Executive Head Teacher: Nathalie Parker

Acting Head Teacher: Tony McMahon

Address: Killick Street, N1 9AZ

[Winton Primary School map](#)

Bus routes: 17, 19, 30, 73, 91, 214, 259, 476

Nearest stations: King's Cross or Caledonian Road



Type of School:	Mixed Community
Age range:	2 - 11
Total number of places available at the school (YR-Y6):	210
Number of places available in reception class:	30
School start and finish times:	8.55am - 3.30pm
Accessibility:	Accessible toilets, lift in sports hall
DfE Code:	206/2646
Winton Primary School admissions criteria	
Last pupil admitted under distance criterion in Sept 2023:	1.409 miles
Calculate your home to school distance	
For more information Website: www.wintonprimaryschool.com Contact name for admission enquiries: Chrissy Hector Email: admin.winton@lqps.co.uk Tel: 020 7837 6096 Twitter: @wintonprimaryn1	
Does the school have two-year-old provision?	Yes
Does the school have a nursery class?	Yes
Does the school have a breakfast club?	Yes
Does the school have any after-school childcare?	Yes ('Walking Bus' to a nearby play centre)
Does the school have a uniform?	Yes
Visiting dates:	Reception Open Day: check the school website In-year admission appointment: contact the school office

Yerbury Primary School

Fact file

Head Teacher: Miss Cassie Moss

Address: Foxham Road, N19 4RR

[Yerbury Primary School map](#)

Bus routes: 4, 43, 263

Nearest stations: Upper Holloway, Tufnell Park or Archway



Type of School:	Mixed Community
Age range:	3 - 11
Total number of places available at the school (YR-Y6):	420
Number of places available in reception class:	60
School start and finish times:	9.00am - 3.30pm
Accessibility:	Wheelchair access to main reception, accessible toilets
DfE Code:	206/2666
Yerbury Primary School admissions criteria	
Last pupil admitted under distance criterion in Sept 2023:	0.321 miles
Calculate your home to school distance	
For more information	
Website: www.yerbury.islington.sch.uk	
Contact name for admission enquiries: Louise Brown	
Email: admin@yerbury.islington.sch.uk	
Tel: 020 7272 6580	
Does the school have two-year-old provision?	No
Does the school have a nursery class?	Yes
Does the school have a breakfast club?	Yes
Does the school have any after-school childcare?	Yes (Highbury Roundhouse)
Does the school have a uniform?	No
Visiting dates:	Please email the school at admin@yerbury.islington.sch.uk to enquire about upcoming tours

Section 5: Useful information and contacts



FIS, Bright Start and Free School Meals

Family Information Service (FIS)

Islington FIS gives free, impartial information, advice and guidance about services for children, young people and families in Islington. You can use the FIS to find services which will help you in your family life, including childcare, free early learning, employment and benefits advice, support for disabled children and fun things to do in Islington.

[Find Your Islington | Islington FIS, Family Information Service](#)

E. fis@islington.gov.uk or T. 020 7527 5959.

The Right Start with Bright Start!

Bright Start offers a range of activities and services for families from pregnancy to a child's fifth birthday, in friendly, safe and welcoming venues across Islington. Bright Start incorporates our conception to age two Start for Life offer and is part of our Family Hubs 0-25 programme. As well as childcare and early education, child and family health services, family and parenting support, Bright Start provides stay and play sessions and fun activities, inside and outdoors, where parents-to-be, parents and children can meet other local families.

Where can I find Bright Start Islington?

You can drop into your local children's centre or family hub to find services and activities. You can access some services such as health visiting and family support in your home. Other Bright Start services and activities are available across the borough in health centres, libraries, wildlife gardens and community centres.

You can call Bright Start on: 020 7527 8376 or [Find Children's Centres and Bright Start Services](#)

You can also visit our [Start for Life](#) pages for information to help you in the first 1,001 days of your baby's life, from conception to age two.

Free School Meals

Islington was one of the first local authorities in England to fund universal Free School Meals for all maintained nursery and primary school children in the borough aged three and above.

To take advantage of this scheme you will need to complete the online [Free School Meals registration form](#).

For every child who meets the National Free School Meals eligibility criteria, the school will receive an additional £1,455. This helps schools to provide valuable support such as extra tuition, learning assistants and after-school clubs.

Find out more by emailing FreeSchoolMeal@islington.gov.uk

Additional educational needs

Our primary schools welcome and provide for all children. Whatever your child's needs they will be able to fully participate in school life.

We believe that all children are entitled to a rich and diverse curriculum that is tailored to meet each child's individual needs.

For Islington's more able children, our schools offer a varied programme of activities and challenges to develop their aptitudes, skills and abilities.

For those with special educational needs, schools encourage and support children to become confident learners and celebrate their achievements as valued members of the school community.

For children with English as an additional language, schools ensure that their language development needs are met with high quality language-rich classroom practice, effective induction systems and targeted interventions. This work is supported by trained specialist teachers, teaching assistants and bilingual parent support assistants.

The best way to find out if a particular school would suit your child is to visit the school and see for yourself. Why not book onto an open day or tour of the school? Details are included in the fact file for each school.

Please see [Islington's SEND Local Offer](#) for more information or contact **020 3031 6651 / 6652** for independent SEND support and advice.

Attendance matters: every day counts!

Time for school

Good attendance and punctuality provide the best chance for your child to achieve success. The evidence speaks for itself!

Pupils with higher KS2 attainment in 2019 had lower levels of absence over the key stage compared to those with lower attainment. Pupils with:

- 97.3% attendance achieved the **higher standard** in reading, writing and maths at the end of KS2
- 96.5% attendance achieved the **expected standard** in reading, writing and maths at the end of KS2
- 95.3% attendance **did not** achieve the expected standard in reading, writing and maths at the end of KS2.

Did you know that being 10 minutes late, every day adds up to 32 hours of lost learning a year? That's the equivalent of 6 days and 2 hours!

Every day really does count.



A borough-wide approach

Islington's 'community of schools' is committed to securing good attendance and punctuality for your child. This means that term-time holidays will not be authorised (unless there are exceptional circumstances), and every absence will be followed up with you. Schools will work with you to improve your child's attendance, but ultimately the legal duty to secure regular school attendance sits with parents. In some cases, where attendance fails to improve, this may result in penalty notices (fines) or prosecution.

Getting to School

Islington has a great network of bus, tube and rail links making it easy to get to any of Islington's schools. Find out more on the [TfL website](#).

Sustainable travel

Islington Council is working with schools to promote safer, healthier and more environmentally friendly ways to travel. Our aims are to:

- make cycling and walking safer and more attractive
- increase the number of school pupils using local bus services
- reduce traffic congestion around schools
- develop partnerships with schools, their communities and other organisations
- promote the development of school travel plans
- promote safety through education and training
- promote the health benefits of walking and cycling
- promote sustainable travel choices by ensuring any new schools are accessible by walking, cycling and public transport
- raise awareness of School Streets.

Cycling to school, work and for daily journeys is a fun, quick and cheap way to get around as well as being good for the environment and for physical and mental health.

Walking is a great way to keep fit, help the environment and have fun! Why not start or join [Islington School Streets](#) a walking bus to your child's school? To find out more please see [Islington School Streets](#).

TfL STARS

Islington Council support active travel in schools through the creation of school travel plans using the [TfL STARS](#) platform. By running STARS activities, schools can gain DfT-recognised accreditation. A school travel plan will look at the journeys pupils make to get to and from school and why they make certain travel and transport choices. With this information we can work with schools to find practical solutions to encourage safe, healthy and environmentally friendly travel choices. For more information on school travel plans, please email schooltravelplans@islington.gov.uk or call 07977 267282.

Bikeability

Islington Council offers free [Bikeability](#) cycle training to all our schools. Level 2 (on road) is offered to Years 5 and 6 and Level 1 (off road) to Years 3 and 4. Helmets and bikes are provided. Additionally, beginner sessions are run in the school holidays for those children looking to learn to ride and develop their control skills. Please visit our [cycle training website](#) for more information or email bart.smith@islington.gov.uk or call 07793 144985.

Adult Cycle Skills

Parents, carers and school staff who work in Islington can get [free cycle skills](#) sessions to either learn to ride or become more confident on the roads. Bikes can be provided, and sessions arranged to a time that suits you

Glossary

Academies

Academies are independently managed, all-ability schools. The governing body sets its own admissions criteria, in line with the statutes laid down in the School Admissions Code.

Admission Criteria (or Oversubscription Criteria)

The rules by which applications will be prioritised for admission when there are more applicants than places available. These rules must be published on the school's website.

Admission Authority

The body responsible for deciding the admission criteria and for allocating school places. In the case of community schools, this is the local authority and in the case of voluntary aided schools, Free Schools and Academies it is the school's governing body.

Children looked after/Previously looked after (CLA /PLAC)

A looked after child or a child who was previously looked after but immediately after being looked after became subject to an adoption, child arrangements, or special guardianship order including those who appear [to the admission authority] to have been in state care outside of England and ceased to be in state care as a result of being adopted.

A looked after child is a child who is (a) in the care of a local authority, or (b) being provided with accommodation by a local authority in the exercise of their social services functions (see the definition in Section 22(1) of the Children Act 1989).

An adoption order is an order under the Adoption Act 1976 (see Section 12 adoption orders) and children who were adopted under the Adoption and Children Act 2002 (see Section 46 adoption orders).

A 'Child Arrangements Order' is an order settling the arrangements to be made as to the person with whom the child is to live under Section 8 of the Children Act 1989 as amended by Section 14 of the Children and Families Act 2014. Section 14A of the Children Act 1989 defines a 'Special Guardianship Order' as an order appointing one or more individuals to be a child's special guardian (or special guardians).

Community schools

Community schools are run by the local authority which employs the staff and owns the land and buildings. Islington Council sets the admissions criteria for community schools.

Compulsory school age

A child reaches compulsory school age on the prescribed day following their fifth birthday. The prescribed days are 31 December, 31 March and 31 August

Cut-off distance

The last pupil admitted under the distance criterion. Use the following link for cut-off distance maps www.islington.gov.uk/cut-offdistance.

Distances for Islington's community schools will be measured in a straight line (as the crow flies) from the home address to the midpoint of the school grounds, using the local authority's computerised measuring system. Those living closer to the school will receive higher priority.

Equal Preference Scheme

Each preference is considered independently against the school's published admissions criteria. If the applicant is eligible for admission to more than one school, the highest preference school is offered.

Family Information Service

[The Family Information Service \(FIS\)](#) gives free, impartial information, advice and guidance about services for children, young people and families in Islington. Find out about childcare, employment, benefits, support for disabled children and more.

Free schools

Free schools are independently managed, all-ability schools funded by the government. They are run on a not-for-profit basis and can be set up by charities, universities, independent schools, community and faith groups, teachers, parents and businesses. Free schools can change the length of school terms and the school day and don't need to follow the national curriculum.

Foundation schools

Foundation schools are run by their own governing body, which employs the staff and sets the admissions criteria. Land and buildings are usually owned by the governing body or a charitable foundation.

Home local authority

A child's home local authority (local council) is the local authority where they live, i.e. the council you pay your council tax to.

PAN (Published Admission Number)

The number of school places that the admission authority must offer in each relevant age group.

Pan-London System (PLR)

Primary school places in London are co-ordinated through the Pan-London admissions scheme that aims to simplify the primary application process and ensure a fairer distribution of places available across London.

Parents and family members

A parent is any person who has parental responsibility or care of the child. Where admission arrangements refer to parent's attendance at church, it is sufficient for just one parent to attend. Family members include single parents and siblings.

Private fostering

Private fostering is when a child under the age of 16 (under 18 if disabled) is cared for by someone who is not their parent or a 'close relative'. This is a private arrangement made between a parent and a carer, for 28 days or more. Close relatives are defined as step-parents, grandparents, brothers, sisters, uncles or aunts. Private foster carers have a duty to inform their home local authority of such arrangements. This must also be declared on the admissions application form. Please see the back page of this brochure for more information.

Sibling

Sibling refers to a brother or sister, half-brother or sister, adopted brother or sister, stepbrother or sister, or the child of the parent or carer's partner, living in the same family at the same address.

Education, Health and Care Plan (EHCP)

The EHCP is a legal document issued by the home local authority detailing the particular needs, resources and provision required to support the child, and can include a named school that is suitable for providing education for that child. EHCPs will continue into further education and training, and for some young people, in order to complete a course or qualification, up to the age of 25.

Summer-born

The term summer-born is used to refer to children born from **1 April to 31 August**. These children are not required to start school until a full school year after the point at which they could first have been admitted.

Supplementary Information Form (SIF)

All parents who list their preferred schools on the local authority's online admission application are regarded as having made a valid application. A supplementary information form may also be required for applicants considered under the criteria of faith schools, for boarding school and for selective schools. *Please check the school's fact file for details.*

Trust schools

A Trust school is a type of foundation school which forms a charitable trust with an outside partner. For example, a business or educational charity aiming to raise standards and explore new ways of working.

Voluntary-aided schools (VA)

Voluntary-aided schools are mainly religious or 'faith' schools, although anyone can apply for a place. As with foundation schools, the governing body employs the staff and sets the admissions criteria.

School buildings and land are normally owned by a charitable foundation, often a religious organisation. The governing body contributes to building and maintenance costs.

Key information

Apply online: [London e-Admissions system](#)

Remember: **There is no automatic entry to reception from nursery. Apply now!**

Apply on time: Closing date **15 January 2024**

Offer Day: You will receive an email in the evening of **16 April 2024**

Contact the Admissions Team:

T: 020 7527 5515

E: admissions@islington.gov.uk

Do you know someone who is under 16 and not living at home?



“My mother recently had an operation so I’m going to be staying with family friends for the next 3 months”



“Things got really bad at home, I would argue with my parents all the time. Now I live with my friends and her parents”



“I came to the UK on holiday but ended up living with my cousins. I’ve been in the UK for over 5 years now”

If you know a child in this situation or would like more information please call the Islington Children’s Services Contact Team on **020 7527 7400** or email csctreferrals@islington.gov.uk



Is your child up to date with all their vaccinations?

Starting school means mixing with lots more children and adults. Being fully vaccinated will protect your child from serious diseases such as measles, mumps and rubella.

- The good news is that it's never too late to protect your child
- Check your child's red book, or ring your GP practice, to check your child's vaccination status
- Call your GP practice to make an appointment for any missed vaccinations

If you would like to know more about measles, the MMR vaccine or other vaccine-preventable diseases, there is lots of information on the [Vaccine Knowledge Project website](#).