



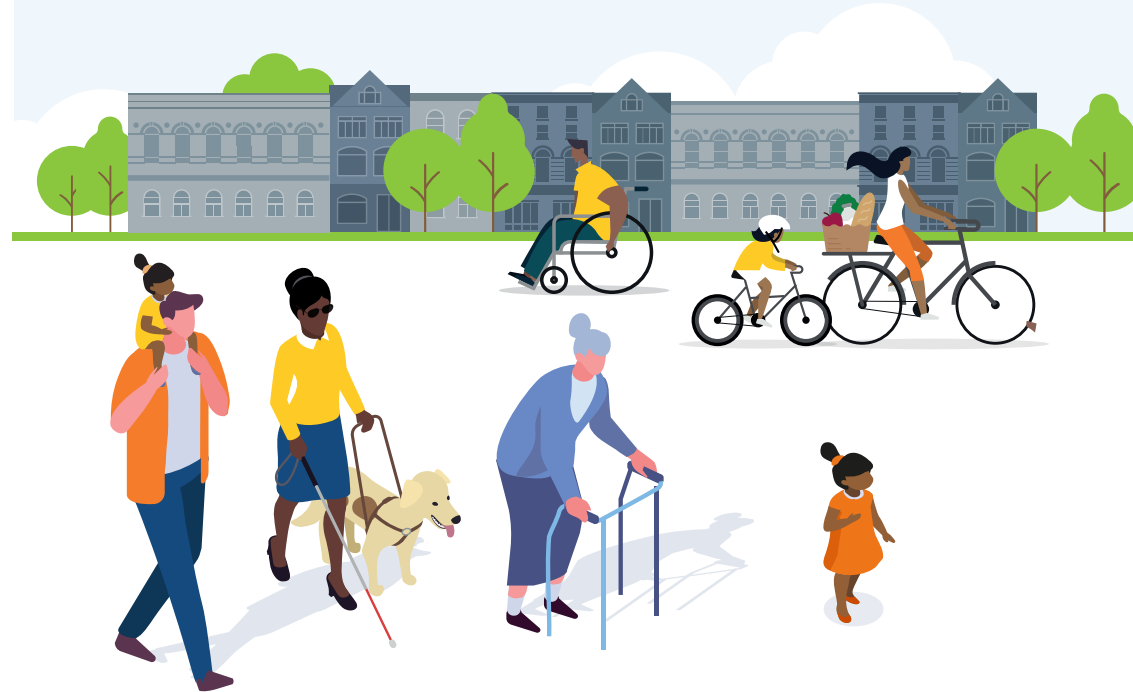
The current traffic restrictions, shown on the map on the left, will continue to operate as normal.



People-Friendly Streets
Better places for everyone

Canonbury East people-friendly streets neighbourhood

Next steps and future improvements



Get in touch

If you have further questions, drop us a line at CanonburyEastLTN@islington.gov.uk or by post:

Public Realm, 1 Cottage Road, London, N7 8TP.

To find out more about our people-friendly streets programme please visit: www.islington.gov.uk/peoplefriendlystreets

Do you need this information in another language, or reading format such as Braille, large print, or Easy Read? Please contact us at CanonburyEastLTN@islington.gov.uk

Yours sincerely,

Councillor Rowena Champion

Executive Member for Environment, Air Quality and Transport

Dear residents,

In August 2020, as part of our people-friendly streets (PFS) scheme, we introduced a low traffic neighbourhood (LTN) trial in the Canonbury East area. The Canonbury East people-friendly streets neighbourhood creates cleaner, greener and healthier streets, making it easier for people to walk, cycle, scoot, wheel and use buggies and wheelchairs.

The objectives of the Canonbury East PFS neighbourhood trial were:

- To make it easier and safer to walk and cycle as a first choice for local travel
- To clean up the air we breathe and protect and improve the environment
- To reduce danger, eliminate deaths and serious injuries on Islington's streets

We monitored the trial and held a public consultation from 2 November to 30 November 2021.

The feedback from the consultation and monitoring results demonstrated that the trial had had largely positive impacts on the Canonbury East PFS neighbourhood and achieved the trial's objectives.

In January 2022, we announced that we would be continuing the Canonbury East PFS neighbourhood and made an important change to allow Blue Badge holders to travel within the neighbourhood.

New signage was installed at Dove Road, Ockendon Road, Englefield Road, Downham Road, Ecclesbourne Road and Halliford Road. A new traffic filter was installed at Ecclesbourne Road and two traffic filters at Elmore Street and Halliford Street were relocated.

Next steps for the Canonbury East LTN

We have continued to monitor the Canonbury East PFS neighbourhood.

The final monitoring results compared data collected in July 2021 with data collected in July 2022 to monitor the scheme after we exempted eligible Blue Badge holders.

The results demonstrate that the Canonbury East PFS neighbourhood is continuing to have positive impacts.

We have decided to continue the Canonbury East PFS neighbourhood with the Blue Badge holders exemption on a permanent basis from 11 November 2022.



To view the full final monitoring report, visit our website or scan the QR code:

<https://www.islington.gov.uk/peoplefriendlystreets/canonburyeast>



The future of the Canonbury East LTN

We will continue to work to improve the local environment in Canonbury East. As part of the **people-friendly pavements programme** we will make improvements to footpaths to ensure they are accessible for walking, wheeling and using buggies and wheelchairs.

We will also work with local people to implement more **greening** with three pilots at **Elmore Street, Cleveland Road and Wilton Villas**. This will help boost local biodiversity, improve air quality, and create a more pleasant environment for local people to come together.

We will continue to work with TfL on lifting banned turns on **Essex Road and New North Road** junction.

Additionally, we will continue to monitor local roads and address safety concerns at main road junctions, exploring options for further speed reduction measures, and improving conditions for people walking and cycling.