



**People-Friendly Streets**  
Better places for everyone

# **Cycleway 38 – Liverpool Road people-friendly streets trial**

**Consultation results and next steps**



**ISLINGTON**

For a more equal future

## Dear resident,

In September 2020, as part of our people-friendly streets (PFS) programme, the council introduced the Cycleway 38 (C38) trial between Holloway Road and Pentonville Road providing a safer cycle route for all.

The scheme is a continuation of the Cycleway 38 North route and provides protected space for people cycling, connecting residents across the borough and towards the City and the West End.

Cycleway 38 forms part of the strategic network of cycle routes the council is developing and delivering across the borough as part of the people-friendly streets (PFS) programme.

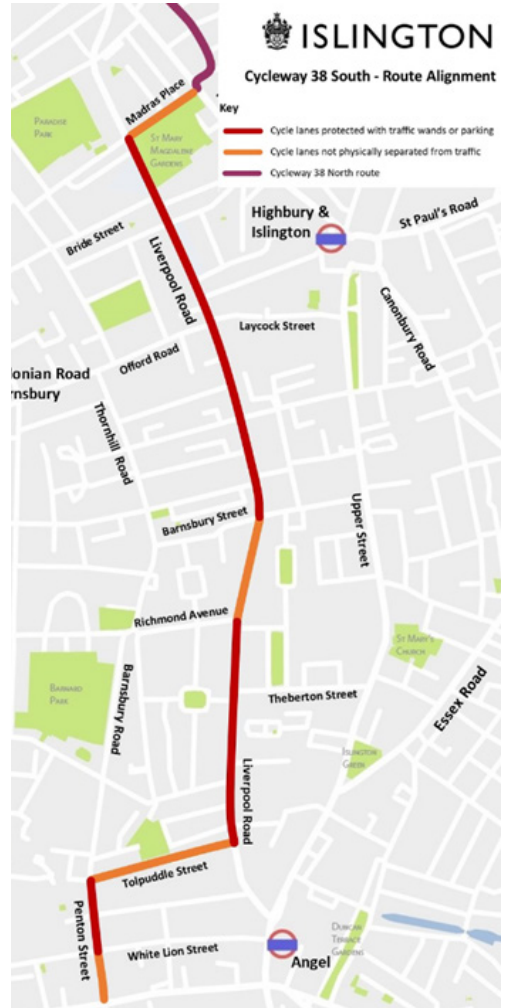
The objectives of the Cycleway 38 South trial were:

- To make it easier and safer to walk and cycle as a first choice for local travel
- To reduce road danger, eliminate all deaths and serious injuries
- To clean up the air we breathe and protect the environment

To help measure the success of Cycleway 38 South we collected feedback throughout the trial period, published monitoring data and held a public consultation from 18 November 2021 to 15 December 2021. To view the full consultation report and the monitoring report, visit our website: [www.islington.gov.uk/peoplefriendlystreets/cycleway38](http://www.islington.gov.uk/peoplefriendlystreets/cycleway38).

The feedback from the consultation and monitoring results show that the trial has had largely positive impacts. **We have decided to keep Cycleway 38 South.**

## Map of Cycleway 38 South route



## Next steps for Cycleway 38

We have listened carefully to feedback from residents, and will introduce a package of measures to improve the scheme in the short term.

These include, but are not limited to:

- Installing SLOW markings on the approach to all zebra crossings on Liverpool Road
- Installing extra signage and road markings on the approach to zebra crossings
- Introducing pedestrian refuges at the Zebra crossings on Liverpool Road near Theberton Street and Richmond Avenue
- Speed reduction measures
- Providing continuous, cycleway branded signage
- Reviewing the prominence of cycle lane markings between Barnsbury Street and Richmond Avenue
- Working with residents and businesses to identify opportunities for greening along the route.

We will continue to work with residents and businesses on suggestions for longer term improvements in the area to address wider concerns about the volume and speed of motorised through traffic.

## Works to enable improvements

We will be working throughout 2022 to develop and deliver measures, including those outlined above, to improve the scheme for all users.

The works will commence in April 2022, residents will be notified accordingly if any works require temporary changes to parking and access arrangements.

## Get in touch

You can reach out to us if you have further questions or suggestions, drop us a line at [Cycleway38@islington.gov.uk](mailto:Cycleway38@islington.gov.uk) or by post:

Public Realm, 1 Cottage Road,  
London, N7 8TP.

To find out more about our people-friendly streets programme please visit: [www.islington.gov.uk/peoplefriendlystreets](http://www.islington.gov.uk/peoplefriendlystreets)

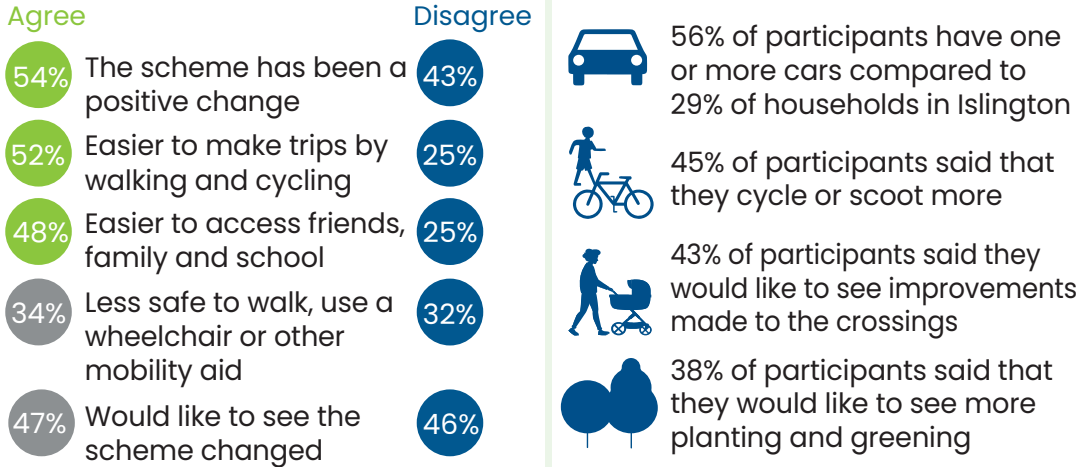
Do you need this information in another language, or reading format such as Braille, large print, or Easy Read? Please contact us at [Cycleway38@islington.gov.uk](mailto:Cycleway38@islington.gov.uk) or by post at Public Realm, 1 Cottage Road, London, N7 8TP.

Yours sincerely,



Councillor Rowena Champion  
**Executive Member for  
Environment and Transport**

# Public consultation key findings



## Monitoring key findings



Cycle volumes along Cycleway 38 have increased by 33%



Cycling increased by 96% on Tolpuddle Street



On average, across all streets monitored, vehicle speeds did not change



Average speeds increased at four monitoring locations along the route



No significant impact on London Fire Brigade response times



No significant change in motor traffic volumes along Cycleway 38



Overall, the changes in levels of nitrogen dioxide reflect those in the borough more widely



No significant impact on anti-social behaviour and crime rates

To help measure the success of C38 we collected feedback throughout the trial period, published monitoring data and held a public consultation from 18 November to 15 December 2021.

To view the full consultation report and the monitoring report, visit our website: [www.islington.gov.uk/peoplefriendlystreets/cycleway38](http://www.islington.gov.uk/peoplefriendlystreets/cycleway38)